

ADDENDUM NO. 1
May 31, 2022
BETTS ROAD AND CROSS ROAD INTERSECTION
ROCHESTER, NH
BID 22-48

The following changes and information are hereby incorporated into the Contract Documents (Project Manual and Drawings). All other information remains unchanged in the original bid documents.

1. Section 00410, Article 5 – Basis of Bid

- . Delete Article 5 and replace it with Attachment “A” The following change is noted:
- **Revised** the UNIT for item no. 403.11403 from CY to TON

2. Section SS 211, Supplemental Specifications, Vibration Monitoring

Delete Supplemental Specification 211 - Vibration Monitoring in its entirety.

Please be advised of questions with responses received to date.

1. Please clarify the unit of measurement for Item 403.11043. The description indicates per ton and the unit column indicates per CY.
Response: See Revision 1 above.
2. Question: The supplemental specification for vibration monitoring was included in the specifications. Will vibration monitoring, pre-construction survey, post-construction survey, etc. be required for this project?
Response: See revision 2 above.
3. Question: Special provisions amendment to section 619 note 3.8. “No Road Closures are permitted after August 29, 2022.” Is that accurate?
Response: This is accurate. Roads must be open to traffic prior to the start of the public school year.
4. Question: Is there test pit data, boring logs, or a Geotech report for this project?
Response: Test pit data has been included as an attachment to this addendum.
5. Question: Requesting an allowance item for asphalt cement adjustment due to current volatility.
Response: Asphalt escalation will not be included in this contract.

All BIDDERS must acknowledge receipt of this Addendum No. 1 on the attached Addenda Acknowledgement Form when submitting a BID for consideration.

Mark J. Debowski, P.E.
Project Manager
Greenman-Pedersen, Inc.



May 27, 2022

Attachments:

Attachment A – Section 00410, Article 5 – Basis of Bid REVISED

Attachment B – Test Pit Information

ADDENDA ACKNOWLEDGEMENT FORM
Please Submit with Bid 22-48

BIDDER acknowledges receipt of the following addenda (as applicable):

Addendum No. 1 Dated _____

Addendum No. 2 Dated _____

Addendum No. 3 Dated _____

Addendum No. 4 Dated _____

Addendum No. 5 Dated _____

(Name of Bidder)

By: _____

Title: _____

ADDENDUM #1 – ATTACHMENT “A”

Section 00410, Article 5 – Basis of Bid

ARTICLE 5 – BASIS OF BID

- 5.01 Bidder will complete the Work in accordance with the Contract Documents for the following prices:

BID SCHEDULE

ITEM NO.	DESCRIPTION	UNIT	QUANTITY	UNIT COST	COST
201.1	Clearing and Grubbing, for the unit price per acre of:	A	0.2		
201.22	Removing Large Trees, for the price each of:	EA	6		
201.4	Removing Stumps, for the price each of:	EA	6		
201.882	Invasive Species Control Type II, for the unit price per square yard of:	SY	50		
203.1	Common Excavation, for the unit price per cubic yard of:	CY	1,170		

ITEM NO.	DESCRIPTION	UNIT	QUANTITY	UNIT COST	COST
203.2	Rock Excavation, for the unit price per cubic yard of:	CY	180		
203.601	Embankment-in-Place, for the unit price per cubic yard of:	CY	105		
214	Fine Grading, for the unit price of:	U	1		
304.201	Gravel, for the unit price per cubic yard of:	CY	450		
304.301	Crushed Gravel, for the unit price per cubic yard of:	CY	210		
304.32	Crushed Gravel for Shoulder Leveling, for the unit price per ton of:	TON	35		

ITEM NO.	DESCRIPTION	UNIT	QUANTITY	UNIT COST	COST
403.11023	HBP – 3/4" Binder Mix, Machine Method, for the unit price per ton of:	TON	135		
403.11043	HBP-1/2" Surface Mix, Machine Method, for the unit price per ton of:	TON	200		
403.12	HBP-Hand Method, for the unit price per ton of:	TON	15		
403.16	Pavement Joint Adhesive, for the unit price per linear foot of:	LF	1,650		
410.22	Asphalt Emulsion for Tack Coat, for the unit price per gal of:	GAL	150		
411.3	Plant Mix Surface Treatment (Asphalt Cement), Paver shim, for the unit price per ton of:	TON	40		

ITEM NO.	DESCRIPTION	UNIT	QUANTITY	UNIT COST	COST
417	Cold Planning Bituminous Surfaces, for the unit price per square yard of:	SY	1400		
585.2	Stone Fill, Class B, for the unit price per cubic yard of:	CY	65		
593.421	Geotextile; Perm Control CL. 2, Non-Woven, for the unit price per square yard of:	SY	100		
603.80015	15" Plastic Pipe, for the unit price per linear foot of:	LF	10		
615.0301	Traffic Sign Type C, for the unit price per square foot of:	SF	45		
618.7	Flaggers, for the unit price per hour of:	HR	100		

ITEM NO.	DESCRIPTION	UNIT	QUANTITY	UNIT COST	COST
619.1	Maintenance Of Traffic, for the unit price per unit of:	U	1		
628.2	Sawed Bituminous Pavement, for the unit price per linear foot of:	LF	200		
632.0104	Retroreflective Paint Pave. Marking, 4" Line, for the unit price per linear foot of:	LF	3200		
632.3118	Retroreflective Thermoplastic Pave. Marking, 18" Line, for the unit price per linear foot of:	LF	50		
645.3	Erosion Stone, for the unit price per ton of:	TON	10		
645.44	Temporary Slope Matting Type D (Wildlife Friendly), for the unit price per square yard of:	SY	1240		

ITEM NO.	DESCRIPTION	UNIT	QUANTITY	UNIT COST	COST
645.512	Compost Sock for Perimeter Berm, for the unit price per linear foot of:	LF	780		
645.531	Silt Fence, for the unit price per linear foot of:	LF	780		
646.41	Turf Establishment with Mulch, Tackifiers and Humus, for the unit price per square yard of:	SY	1240		
651.01	Eastern White Pine, for the unit price per unit of:	U	8		
652.69	Quercus Rubra Red Oak, per the unit price per unit of:	U	2		

ITEM NO.	DESCRIPTION	UNIT	QUANTITY	UNIT COST	COST
692.	Mobilization, for the unit price per unit of:	U	1		
1008.4	Alterations and Additions as Needed – Utility Adjustments, for the unit price of: One Thousand Five Hundred Dollars	\$	1,500	1	\$1500
1010.15	Fuel Adjustment, for the unit price of: One Thousand Two Hundred Fifty Dollars	\$	1,250	1	\$1250

TOTAL CONTRACT PRICE BASE BID:

_____ Dollars

and _____ Cents (words)

(\$ _____) (numbers)

Unit Prices have been computed in accordance with paragraph 13.03.B of the General Conditions.

Bidder acknowledges that estimated quantities are not guaranteed and are solely for the purpose of comparison of Bids, and final payment for all Unit Price Bid items will be based on actual quantities, determined as provided in the Contract Documents.

ADDENDUM #1 – ATTACHMENT “B”

Betts and Cross Road Test Pit Notes

Tuesday September 14, 2021

TP-1 was approximately 25' off Betts Road EP, adjacent to the corner of Cross Rd. Hole location was on top of existing embankment (approximately 6' above road elevation) Hole was dug ~9.0' deep. Mostly clean fill, with small shale/rock. No Ledge found.

TP-2 was approximately 50' from the existing drain culvert about 15' off of Betts Road EP. Surface elevation was at road level. Hole dug to 4' deep. Large boulder at 3', was able to get bucket around it on one side but did not show signs of movement.

TP-3 was just off the EP of Betts Road at the bottom of the existing embankment. Hit solid rock approximately 1' below grade. Had the operator scrape off some of the embankment in that same location. Loose shale like rock throughout but nothing solid, appeared to be clean soil otherwise.

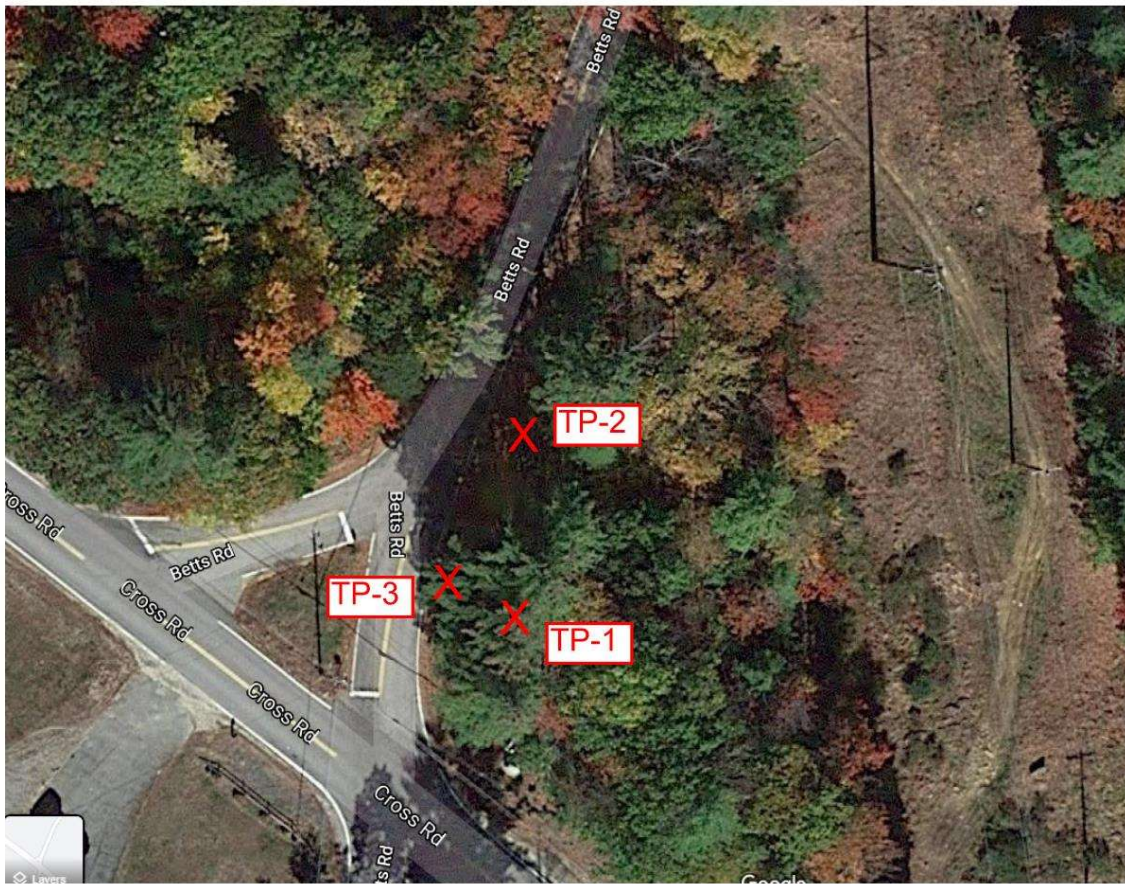


Figure 1: Test Pit Locations



Figure 2: TP-1



Figure 3: TP-1



Figure 4: TP-2



Figure 5: TP-2



Figure 4: TP-3



Figure 7: TP-3