

ADDENDUM NUMBER 2:  
**Strafford Square Intersection Improvements Project**  
May 31, 2022

This Addendum forms part of the original document marked: **Strafford Square Intersection Improvements – Phase 2 – Roadway Reconstruction Project.**

- 1). **BIDDER QUESTIONS:**  
Bidder questions received by Stantec have been included, with responses, attached to this Addendum.
  
- 2). **SECTION 00301A:**  
REVISE Bid Tab, per attached.  
Add:  
Item 670.04501  
Item 1010.65
  
- 3). **SPECIAL ATTENTION**  
REPLACE Asphalt Cement Adjustment SA (5/24/22)
  
- 4). **SPECIAL ATTENTION**  
REPLACE Fuel Adjustment SA (5/25/22)
  
- 5). **SECTION 670;**  
ADD Item 670.04501 - Construct and Remove Diversion:
  
- 6). **SECTION 1010;**  
ADD Item 1010.65 – Plastic Resin Adjustment:
  
- 7). **CONTRACT PLANS;**  
REVISE the following plans sheets (Attached):  
Sheet 4 of 96 – Revised Quantity summary tables  
Sheet 14 of 96 – Revised Vinyl Fence Detail

All else remains unchanged from original bid document.

Please acknowledge receipt of this addendum within your proposal. Failure to do so may subject a bidder to disqualification.

End of Addendum Number 2

BIDDER QUESTIONS:

**Strafford Square Intersection Improvements Project**

May 31, 2022

- Requesting an additional item be included for material escalation. Given the volatility of materials, suppliers not willing to hold prices more than 7-days and the requirements to hold our bid for 60-days, we request and allowance item for escalation and inflation of material prices from bid to notice of award.
  - *Item 1010.65 – Plastic Resin Adjustment has been added to the contract.*
- The substantial completion date lists some tasks that are normally reserved for final completion (final paving, final markings). What items are expected to be completed from substantial completion to final completion?
  - *Due to the unique nature of the roundabout, final paving and marking have been included as part of substantial completion. Items such as landscaping, sidewalk sealing, and site cleanup are considered items to be completed prior to final completion.*
- It appears there will be work associated with creating temporary travel lanes/roadways for the phasing and construction of this project. Will required excavation/embankment for temporary means be paid under contract items? Will temporary gravels be paid under contract items? We see there is an item for temporary pavement, but there are no items for other temporary measures.
  - *To help clarify and quantify traffic phasing costs, Item 670.04501 - Construct and Remove Diversion has been added to the contract. Note, temporary pavement will still be paid separately.*
- The fence detail on sheet 14 is for a wooden fence. Please provide a detail for a vinyl fence.
  - *Fence Detail has been revised. The intent of the fence is to provide a simple solid stockade style vinyl fence to provide privacy and screening for abutting properties.*
- Please confirm that post assemblies are required for the vinyl fence.
  - *Post assemblies are only required if the contractor's proposed fencing system requires them.*

ROCHESTER - STRAFFORD SQUARE - PHASE 2 - ROADWAY RECONSTRUCTION PROJECT

BID FORM - UNIT PRICE SCHEDULE - BASE BID

ITEM NO.	ITEM DESCRIPTION AND UNIT PRICE BID WRITTEN IN WORDS	UNIT	ESTIMATED QUANTITY	UNIT PRICE	TOTAL PRICE
201.4	Removing Stumps, for the unit price per each of: _____ Dollars (words) and _____ Cents.	EA	25		
202.41	Removal of Existing Pipe 0-24" Diameter, for the unit price per linear foot of: _____ Dollars (words) and _____ Cents.	LF	650		
202.5	Removal of Catch Basins, Drop Inlets, and Manholes, for the unit price per each of: _____ Dollars (words) and _____ Cents.	EA	14		
202.6	Curb Removal for Salvage, for the unit price per linear foot of: _____ Dollars (words) and _____ Cents.	LF	1,200		
202.8	Removal of Fence, for the unit price per linear foot of: _____ Dollars (words) and _____ Cents.	LF	100		
203.1	Common Excavation, for the unit price per cubic yard of: _____ Dollars (words) and _____ Cents.	CY	7,250		
203.2	Rock Excavation, for the unit price per cubic yard of: _____ Dollars (words) and _____ Cents.	CY	450		
203.6	Embankment-In-Place (F), for the unit price per cubic yard of: _____ Dollars (words) and _____ Cents.	CY	190		
206.19	Common Structure Excavation Exploratory, for the unit price per cubic yard of: _____ Dollars (words) and _____ Cents.	CY	70		

ROCHESTER - STRAFFORD SQUARE - PHASE 2 - ROADWAY RECONSTRUCTION PROJECT

BID FORM - UNIT PRICE SCHEDULE - BASE BID

ITEM NO.	ITEM DESCRIPTION AND UNIT PRICE BID WRITTEN IN WORDS	UNIT	ESTIMATED QUANTITY	UNIT PRICE	TOTAL PRICE
209.1	Granular Backfill, for the unit price per cubic yard of: _____ Dollars (words) and _____ Cents.	CY	210		
211.11	Vibration Monitoring Services, for the unit price per hour of: _____ Dollars (words) and _____ Cents.	HR	80		
214.	Fine Grading, for the unit price per unit of: _____ Dollars (words) and _____ Cents.	U	1		
304.2	Gravel (F), for the unit price per cubic yard of: _____ Dollars (words) and _____ Cents.	CY	2,875		
304.3	Crushed Gravel (F), for the unit price per cubic yard of: _____ Dollars (words) and _____ Cents.	CY	2,100		
304.35	Crushed Gravel for Drives, for the unit price per cubic yard of: _____ Dollars (words) and _____ Cents.	CY	260		
403.11013	HBP-1" Base Mix, Machine Method, for the unit price per ton of: _____ Dollars (words) and _____ Cents.	TON	1,300		
403.11023	HBP-3/4" Binder Mix, Machine Method, for the unit price per ton of: _____ Dollars (words) and _____ Cents.	TON	1,350		
403.11043	HBP-1/2" Surface Mix, Machine Method, for the unit price per ton of: _____ Dollars (words) and _____ Cents.	TON	725		
403.12	HBP-Hand Method, for the unit price per ton of: _____ Dollars (words) and _____ Cents.	TON	360		

ROCHESTER - STRAFFORD SQUARE - PHASE 2 - ROADWAY RECONSTRUCTION PROJECT

BID FORM - UNIT PRICE SCHEDULE - BASE BID

ITEM NO.	ITEM DESCRIPTION AND UNIT PRICE BID WRITTEN IN WORDS	UNIT	ESTIMATED QUANTITY	UNIT PRICE	TOTAL PRICE
403.16	Pavement Joint Adhesive, for the unit price per linear foot of: _____ Dollars (words) and _____ Cents.	LF	26,500		
403.19	HBP-Temporary, for the unit price per ton of: _____ Dollars (words) and _____ Cents.	TON	530		
410.22	Asphalt Emulsion for Tack Coat, for the unit price per gallon of: _____ Dollars (words) and _____ Cents.	GAL	670		
417.	Cold Planing Bituminous Surfaces, for the unit price per square yard of: _____ Dollars (words) and _____ Cents.	SY	480		
520.01	Concrete Class AA, for the unit price per cubic yard of: _____ Dollars (words) and _____ Cents.	CY	1		
544.	Reinforcing Steel (F), for the unit price per pound of: _____ Dollars (words) and _____ Cents.	LB	40		
593.211	Geotextile; Separation CL.1, Non-Woven, for the unit price per square yard of: _____ Dollars (words) and _____ Cents.	SY	1,000		

ROCHESTER - STRAFFORD SQUARE - PHASE 2 - ROADWAY RECONSTRUCTION PROJECT

BID FORM - UNIT PRICE SCHEDULE - BASE BID

ITEM NO.	ITEM DESCRIPTION AND UNIT PRICE BID WRITTEN IN WORDS	UNIT	ESTIMATED QUANTITY	UNIT PRICE	TOTAL PRICE
603.0001	Video Inspection, for the unit price per linear foot of: _____ Dollars (words) and _____ Cents.	LF	1,130		
603.00212	12" R.C. Pipe, 2000D, for the unit price per linear foot of: _____ Dollars (words) and _____ Cents.	LF	30		
603.00215	15" R.C. Pipe, 2000D, for the unit price per linear foot of: _____ Dollars (words) and _____ Cents.	LF	490		
603.00224	24" R.C. Pipe, 2000D, for the unit price per linear foot of: _____ Dollars (words) and _____ Cents.	LF	180		
603.00315	15" R.C. Pipe, 3000D, the unit price per linear foot of: _____ Dollars (words) and _____ Cents.	LF	250		
603.82212	12" PE Pipe (Type S), for the unit price per linear foot of: _____ Dollars (words) and _____ Cents.	LF	180		
603.82215	15" PE Pipe (Type S), for the unit price per linear foot of: _____ Dollars (words) and _____ Cents.	LF	20		
604.0007	Polyethylene Liner, for the unit price per each of: _____ Dollars (words) and _____ Cents.	EA	34		
604.124	Catch Basins Type B, 4-Foot Diameter, for the unit price per unit of: _____ Dollars (words) and _____ Cents.	U	21		

ROCHESTER - STRAFFORD SQUARE - PHASE 2 - ROADWAY RECONSTRUCTION PROJECT

BID FORM - UNIT PRICE SCHEDULE - BASE BID

ITEM NO.	ITEM DESCRIPTION AND UNIT PRICE BID WRITTEN IN WORDS	UNIT	ESTIMATED QUANTITY	UNIT PRICE	TOTAL PRICE
604.224	Drop Inlets Type B, 4-Foot Diameter, for the unit price per unit of: _____ Dollars (words) and _____ Cents.	U	3		
604.324	Drainage Manholes, 4-Foot Diameter, for the unit price per unit of: _____ Dollars (words) and _____ Cents.	U	6		
604.4	Reconstructing/Adjusting Catch Basin & Drop Inlet, for the unit price per linear foot of: _____ Dollars (words) and _____ Cents.	LF	44		
604.51	Reconstruct Sewer Manhole, 4 Foot Diameter, for the unit price per linear foot of: _____ Dollars (words) and _____ Cents.	LF	14		
604.52	Reconstructing/Adjusting Drainage Manholes, for the unit price per linear foot of: _____ Dollars (words) and _____ Cents.	LF	13		
604.62	Drainage Manhole Covers and Frames, for the unit price per each of: _____ Dollars (words) and _____ Cents.	EA	1		
604.72	Grates & Frames, Type B, for the unit price per each of: _____ Dollars (words) and _____ Cents.	EA	3		
607.5660	Vinyl Fence (Stockade), 6'-0" High, for the unit price per linear foot of: _____ Dollars (words) and _____ Cents.	LF	380		
607.5760	Post Assemblies for Vinyl Fence (Stockade), 6'-0" High, for the unit price per each of: _____ Dollars (words) and _____ Cents.	EA	10		

ROCHESTER - STRAFFORD SQUARE - PHASE 2 - ROADWAY RECONSTRUCTION PROJECT

BID FORM - UNIT PRICE SCHEDULE - BASE BID

ITEM NO.	ITEM DESCRIPTION AND UNIT PRICE BID WRITTEN IN WORDS	UNIT	ESTIMATED QUANTITY	UNIT PRICE	TOTAL PRICE
608.24	4" Concrete Sidewalk (F), for the unit price per square yard of: _____ Dollars (words) and _____ Cents.	SY	1,250		
608.26	6" Concrete Sidewalk (F), for the unit price per square yard of: _____ Dollars (words) and _____ Cents.	SY	110		
608.385	8" Textured Reinforced Concrete Sidewalk, for the unit price per square yard of: _____ Dollars (words) and _____ Cents.	SY	340		
608.4615	Brick Paver Surface, for the unit price per square yard of: _____ Dollars (words) and _____ Cents.	SY	360		
608.54	Detectable Warning Devices, Cast Iron, for the unit price per square yard of: _____ Dollars (words) and _____ Cents.	SY	35		
609.01	Straight Granite Curb, for the unit price per linear foot of: _____ Dollars (words) and _____ Cents.	LF	2,800		
609.011	Special Granite Curb, for the unit price per linear foot of: _____ Dollars (words) and _____ Cents.	LF	50		
609.01187	Straight Granite Curb, 18" High with 3" Rounded Edge, for the unit price per linear foot of: _____ Dollars (words) and _____ Cents.	LF	490		
609.02	Curved Granite Curb, for the unit price per linear foot of: _____ Dollars (words) and _____ Cents.	LF	510		



ROCHESTER - STRAFFORD SQUARE - PHASE 2 - ROADWAY RECONSTRUCTION PROJECT

BID FORM - UNIT PRICE SCHEDULE - BASE BID

ITEM NO.	ITEM DESCRIPTION AND UNIT PRICE BID WRITTEN IN WORDS	UNIT	ESTIMATED QUANTITY	UNIT PRICE	TOTAL PRICE
609.02187	Curved Straight Granite Curb, 18" High with 3" Rounded Edge, for the unit price per linear foot of: _____ Dollars (words) and _____ Cents.	LF	10		
609.5	Reset Granite Curb, for the unit price per linear foot of: _____ Dollars (words) and _____ Cents.	LF	360		
611.815	Yard Hydrant, for the unit price per each of: _____ Dollars (words) and _____ Cents.	EA	1		
611.90001	Adjusting Water Gates and Shutoffs Set by Others, for the unit price per each of: _____ Dollars (words) and _____ Cents.	EA	15		
611.951	Rigid Pipe Insulation, for the unit price per square foot of: _____ Dollars (words) and _____ Cents.	SF	90		
613.1	Underground Infiltration System, for the unit price per unit of: _____ Dollars (words) and _____ Cents.	U	1		
614.511	Concrete Pull Box 14", for the unit price per each of: _____ Dollars (words) and _____ Cents.	EA	19		
614.72118	2" PVC Conduit, Schedule 80, for the unit price per linear foot of: _____ Dollars (words) and _____ Cents.	LF	300		
614.73218	3" 2-Duct PVC Conduit, Schedule 80, for the unit price per linear foot of: _____ Dollars (words) and _____ Cents.	LF	1,600		

ROCHESTER - STRAFFORD SQUARE - PHASE 2 - ROADWAY RECONSTRUCTION PROJECT

BID FORM - UNIT PRICE SCHEDULE - BASE BID

ITEM NO.	ITEM DESCRIPTION AND UNIT PRICE BID WRITTEN IN WORDS	UNIT	ESTIMATED QUANTITY	UNIT PRICE	TOTAL PRICE
615.0301	Traffic Sign Type C, for the unit price per square foot of: _____ Dollars (words) and _____ Cents.	SF	470		
615.033	Removing Traffic Sign, Type C, for the unit price per unit of: _____ Dollars (words) and _____ Cents.	U	20		
615.0601	Traffic Sign Type CC, for the unit price per square foot of: _____ Dollars (words) and _____ Cents.	SF	90		
616.261	Rectangular Rapid Flashing Beacon (RRFB), for the unit price per unit of: _____ Dollars (words) and _____ Cents.	U	3		
618.61	Uniformed Officers with Vehicle, for the allowance price of: _____ Dollars (words) and _____ Cents.	\$	13,000		
618.7	Flaggers, for the unit price per hour of: _____ Dollars (words) and _____ Cents.	HR	4,500		
619.1	Maintenance of Traffic, for the unit price per unit of: _____ Dollars (words) and _____ Cents.	U	1		
619.25	Portable Changeable Message Sign, for the unit price per unit of: _____ Dollars (words) and _____ Cents.	U	4		
622.52	Resetting Bounds, for the unit price per each of: _____ Dollars (words) and _____ Cents.	EA	12		
625.42210	2-Conductor #10 AWG Cable, for the unit price per linear foot of: _____ Dollars (words) and _____ Cents.	LF	200		

ROCHESTER - STRAFFORD SQUARE - PHASE 2 - ROADWAY RECONSTRUCTION PROJECT

BID FORM - UNIT PRICE SCHEDULE - BASE BID

ITEM NO.	ITEM DESCRIPTION AND UNIT PRICE BID WRITTEN IN WORDS	UNIT	ESTIMATED QUANTITY	UNIT PRICE	TOTAL PRICE
625.42212	2-Conductor #12 AWG Cable, for the unit price per linear foot of: _____ Dollars (words) and _____ Cents.	LF	1,175		
625.42306	3-Conductor #6 AWG Cable, for the unit price per linear foot of: _____ Dollars (words) and _____ Cents.	LF	5,000		
625.43306	#6 Ground Wire, for the unit price per linear foot of: _____ Dollars (words) and _____ Cents.	LF	1,800		
625.43310	#10 Ground Wire, for the unit price per linear foot of: _____ Dollars (words) and _____ Cents.	LF	100		
625.43312	#12 Ground Wire, for the unit price per linear foot of: _____ Dollars (words) and _____ Cents.	LF	1,180		
625.551	Ornamental Light Pole - Single, for the unit price per each of: _____ Dollars (words) and _____ Cents.	EA	12		
625.552	Ornamental Light Pole - Double, for the unit price per each of: _____ Dollars (words) and _____ Cents.	EA	4		
626.2	Meter Pedestal, for the unit price per unit of: _____ Dollars (words) and _____ Cents.	U	1		
628.2	Sawed Bituminous Pavement, for the unit price per linear foot of: _____ Dollars (words) and _____ Cents.	LF	850		
632.0104	Retroreflective Paint Pave. Marking, 4" Line, for the unit price per linear foot of: _____ Dollars (words) and _____ Cents.	LF	12,500		

ROCHESTER - STRAFFORD SQUARE - PHASE 2 - ROADWAY RECONSTRUCTION PROJECT

BID FORM - UNIT PRICE SCHEDULE - BASE BID

ITEM NO.	ITEM DESCRIPTION AND UNIT PRICE BID WRITTEN IN WORDS	UNIT	ESTIMATED QUANTITY	UNIT PRICE	TOTAL PRICE
632.02	Retroreflective Paint Pavement Marking, Symbol or Word, for the unit price per square foot of: _____ Dollars (words) and _____ Cents.	SF	860		
632.1104	Preformed Retroreflective Tape, Type I (Removable) 4" Line, for the unit price per linear foot of: _____ Dollars (words) and _____ Cents.	LF	16,000		
632.3104	Retroreflect. Thermoplas. Pave. Marking, 4" Line, for the unit price per linear foot of: _____ Dollars (words) and _____ Cents.	LF	1,550		
632.3108	Retroreflect. Thermoplas. Pave. Marking, 8" Line, for the unit price per linear foot of: _____ Dollars (words) and _____ Cents.	LF	1,550		
632.3124	Retroreflect. Thermoplas. Pave. Marking, 24" Line, for the unit price per linear foot of: _____ Dollars (words) and _____ Cents.	LF	750		
632.32001	Recessed Retroreflective Thermoplastic Pavement Marking, Symbol or Word, for the unit price per square foot of: _____ Dollars (words) and _____ Cents.	SF	125		
641.	Loam, for the unit price per cubic yard of: _____ Dollars (words) and _____ Cents.	CY	250		
643.21	Fertilizer for Refertilization, for the unit price per pound of: _____ Dollars (words) and _____ Cents.	LB	410		
644.15	Park Seed Type 15, for the unit price per pound of: _____ Dollars (words) and _____ Cents.	LB	40		

ROCHESTER - STRAFFORD SQUARE - PHASE 2 - ROADWAY RECONSTRUCTION PROJECT

BID FORM - UNIT PRICE SCHEDULE - BASE BID

ITEM NO.	ITEM DESCRIPTION AND UNIT PRICE BID WRITTEN IN WORDS	UNIT	ESTIMATED QUANTITY	UNIT PRICE	TOTAL PRICE
645.154	Bark Mulch 4 Inches Deep, for the unit price per square yard of: _____ Dollars (words) and _____ Cents.	SY	360		
645.3	Erosion Stone, for the unit price per ton of: _____ Dollars (words) and _____ Cents.	TON	500		
645.512	Compost Sock for Perimeter Berm, for the unit price per linear foot of: _____ Dollars (words) and _____ Cents.	LF	4,500		
645.52	Ryegrass for Temporary Erosion Control, for the unit price per pound of: _____ Dollars (words) and _____ Cents.	LB	50		
645.531	Silt Fence, for the unit price per linear foot of: _____ Dollars (words) and _____ Cents.	LF	4,500		
645.7	Storm Water Pollution Prevention Plan, for the unit price per unit of: _____ Dollars (words) and _____ Cents.	U	1		
645.71	Monitoring SWPPP and Erosion and Sediment Controls, for the unit price per hour of: _____ Dollars (words) and _____ Cents.	HR	120		
646.3	Turf Establishment with Mulch and Tackifiers, for the unit price per acre of: _____ Dollars (words) and _____ Cents.	A	0.5		
650.2	Landscaping, for the unit price per unit of: _____ Dollars (words) and _____ Cents.	U	1		
654.01	Thuja Occidentalis, for the unit price per each of: _____ Dollars (words) and _____ Cents.	EA	10		

ROCHESTER - STRAFFORD SQUARE - PHASE 2 - ROADWAY RECONSTRUCTION PROJECT

BID FORM - UNIT PRICE SCHEDULE - BASE BID

ITEM NO.	ITEM DESCRIPTION AND UNIT PRICE BID WRITTEN IN WORDS	UNIT	ESTIMATED QUANTITY	UNIT PRICE	TOTAL PRICE
670.04501	Construct and Remove Diversion, for the unit price per unit of: _____ Dollars (words) and _____ Cents.	U	1		
670.066	Mailbox Support Assemblies, for the unit price per each of: _____ Dollars (words) and _____ Cents.	EA	25		
670.4	Steel Bollard, for the unit price per each of: _____ Dollars (words) and _____ Cents.	EA	4		
670.573	Construct Flag Pole and Foundation, for the unit price per unit of: _____ Dollars (words) and _____ Cents.	U	1		
670.8	Permeable Paver System, for the unit price per square yard of: _____ Dollars (words) and _____ Cents.	SY	100		
670.85	Relocate Watering Trough, for the unit price per unit of: _____ Dollars (words) and _____ Cents.	U	1		
692.	Mobilization, for the unit price per unit of: _____ Dollars (words) and _____ Cents.	U	1		
693.	On-the-Job Training of Unskilled Workers, for the allowance price of: _____ Dollars (words) and _____ Cents.	\$	1,200		
698.12	Field Office Type B, for the unit price per month of: _____ Dollars (words) and _____ Cents.	MON	9		

ROCHESTER - STRAFFORD SQUARE - PHASE 2 - ROADWAY RECONSTRUCTION PROJECT

BID FORM - UNIT PRICE SCHEDULE - BASE BID

ITEM NO.	ITEM DESCRIPTION AND UNIT PRICE BID WRITTEN IN WORDS	UNIT	ESTIMATED QUANTITY	UNIT PRICE	TOTAL PRICE
699	Miscellaneous Temporary Erosion and Sediment Control, for the allowance price of: _____ Dollars (words) and _____ Cents.	\$	20,000		
1008.2	Miscellaneous Water Utility Relocations, for the allowance price of: _____ Dollars (words) and _____ Cents.	\$	10,000		
1008.3	Miscellaneous Sewer Utility Relocations, for the allowance price of: _____ Dollars (words) and _____ Cents.	\$	7,500		
1008.51	Alterations and Additions as Needed - Misc. Landscape Treatment, for the allowance price of: _____ Dollars (words) and _____ Cents.	\$	25,000		
1010.15	Fuel Adjustment, for the allowance price of: _____ Dollars (words) and _____ Cents.	\$	20,000		
1010.2	Asphalt Cement Adjustment, for the allowance price of: _____ Dollars (words) and _____ Cents.	\$	10,000		
1010.65	Plastic Resin Adjustment, for the allowance price of: _____ Dollars (words) and _____ Cents.	\$	20,000		

ROCHESTER - STRAFFORD SQUARE - PHASE 2 - ROADWAY RECONSTRUCTION PROJECT

BID FORM - UNIT PRICE SCHEDULE - BASE BID

ITEM NO.	ITEM DESCRIPTION AND UNIT PRICE BID WRITTEN IN WORDS	UNIT	ESTIMATED QUANTITY	UNIT PRICE	TOTAL PRICE
----------	---	------	-----------------------	------------	-------------

Total Amount of Base Bid, based on Unit Price Schedule:

---

(Amount in Figures)

---

(Amount in Words)

All prices must be written in ink or type written. Unit prices shall be written in words as well as figures in the space provided in the bid form. In case of a discrepancy, the amount in words shall govern and the "Total Price" shall be calculated based on the stated quantity multiplied by the written unit price.

All prices shall include labor, material, equipment and Overhead and Profit for work in place in accordance with the Drawings, Specifications and Contract Documents.



ROCHESTER - STRAFFORD SQUARE - PHASE 2 - ROADWAY RECONSTRUCTION PROJECT

BID FORM - UNIT PRICE SCHEDULE - BID ALTERNATIVE #1

ITEM NO.	ITEM DESCRIPTION AND UNIT PRICE BID WRITTEN IN WORDS	UNIT	ESTIMATED QUANTITY	UNIT PRICE	TOTAL PRICE
614.511	Concrete Pull Box, for the unit price per each of: _____ Dollars (words) and _____ Cents.	EA	8		
614.74118	4" PVC Conduit, Schedule 80, for the unit price per linear foot of: _____ Dollars (words) and _____ Cents.	LF	1,680		

Total Amount of Bid Alternative #1, based on Unit Price Schedule:

---

(Amount in Figures)

---

(Amount in Words)

All prices must be written in ink or type written. Unit prices shall be written in words as well as figures in the space provided in the bid form. In case of a discrepancy, the amount in words shall govern and the "Total Price" shall be calculated based on the stated quantity multiplied by the written unit price.

All prices shall include labor, material, equipment and Overhead and Profit for work in place in accordance with the Drawings, Specifications and Contract Documents.

May 24, 2022

**SPECIAL ATTENTION****ASPHALT CEMENT ADJUSTMENT AND  
ASPHALT CEMENT ADJUSTMENT FOR EMULSION**

Bid items involving asphalt concrete mixtures containing asphalt cement may be subject to a price adjustment. Only the asphalt portion of asphalt-rubber cement will be eligible for price adjustment. The adjustment will take effect when the monthly price for asphalt cement as furnished by the Department differs from the base price contained in the proposal. Affected Sections and formulas are detailed below.

The **base price\*** of asphalt cement for this Contract is \$ 735.00 per ton.

The **monthly price\*** of asphalt cement used to determine the Asphalt Cement Adjustment will be furnished by the Department and will be posted on the following web site:  
[www.nh.gov/dot/org/projectdevelopment/construction/documents/MonthlyFuelPricesImperial.pdf](http://www.nh.gov/dot/org/projectdevelopment/construction/documents/MonthlyFuelPricesImperial.pdf)

**\*Source:** The monthly price, applicable for the entire month, is developed from information in the *Asphalt Weekly Monitor*, a publication from Poter and Partners, Inc. The monthly price will be the average of the price range for Southern Maine/New Hampshire PG 64-28 asphalt binder, as published in the *Asphalt Weekly Monitor* on the dates shown in the following table. The base price is the latest available monthly price at the time the contract documents are prepared.

2022					
Month	Publication Date	Month	Publication Date	Month	Publication Date
January	December 27, 2021	May	April 25, 2022	September	August 22, 2022
February	January 24, 2022	June	May 23, 2022	October	September 26, 2022
March	February 21, 2022	July	June 27, 2022	November	October 24, 2022
April	March 21, 2022	August	July 25, 2022	December	November 21, 2022

The contract prices of bituminous materials will be paid under the respective items in the contract. The price adjustment, as provided herein, upwards or downwards, will be made concurrently as the work is accomplished as follows:

**Item 403. \_\_ - Pavement (except items 403.4, 403.16, & 403.26) and Item 411. \_\_ - Hot Bituminous Concrete Leveling Course and Plant Mix Surface Treatment**

The price adjustment will be based on the percent of virgin asphalt cement stated in the Approved Mix Design containing the maximum percentage of reclaimed asphalt pavement. In the event of breakdown or unforeseen circumstances other than weather, an Approved Virgin Mix Design may be used. The price adjustment will then be based on the total percent of virgin asphalt cement in that approved design.

A contract adjustment will be made under **Item 1010.2** based on; [monthly price minus the base price] X [Approved Mix Design percent of virgin asphalt cement] X [tons of pavement used].

SSD: 3/31/14, 7/30/75, 5/9/83, 12/5/84, 2/12/92, 10/19/93, 5/9/94, 1/26/95, 12/30/96, 02/24/97,  
12/08/08, 4/15/09, 01/01/12, 04/16/12, 03/24/15, 01/15/16, 02/21/16, 07/28/16, 04/21/17  
08/22/17, 12/24/18, 12/23/19, 04/08/20, 12/14/20

**Item 410.72 - Chip Seal Surface Treatment Rubber Polymerized**

A contract adjustment will be made under **Item 1010.2** based on; [monthly price minus the base price] X [asphalt factor] X [tons of AC used] where:

Assumptions:

- Asphalt factor equals 82%
- Tons of AC used equals the total number of gallons sprayed divided by 235

**Item 419.1\_\_ - Bonded Wearing Course**

A contract adjustment will be made under **Item 1010.2** based on; [monthly price minus the base price] X [Total AC in the BWC process percent] X [tons of BWC paved] where:

Assumptions:

- Total AC in the BWC process equals 5%

**Item 419.2\_\_ – AR Bonded Wearing Course**

A contract adjustment will be made under **Item 1010.2** based on; [monthly price minus the base price] X [Total AC in the AR BWC process percent] X [asphalt factor] X [tons of BWC paved] where:

Assumptions:

- Total AC in the BWC process equals 5%
- Asphalt factor equals 82%

**Emulsified Asphalt Cement**

[For Items 306.33, 405.\_\_, 410.\_\_ (excluding 410.22, 410.72 & 410.75\_), 418.11\_\_ , 418.32, and 419.3]

A contract adjustment will be made under **Item 1010.21** based on; [monthly price minus the base price] X [percent of residual asphalt cement] X [Tons of Emulsion used].

Assumptions:

- Quantities are assumed to be measured at 60° F
- Volume reduction between typical delivery temperature (+/- 140° F) and 60° F is 2%
- Adjustment payment assumes 62% Residual Asphalt for all grades
- 239 Gallons/Ton is the unit conversion at 60° F

Item 1010.2	Asphalt Cement Adjustment <sup>1</sup>	Dollar
Item 1010.21	Asphalt Cement Adjustment for Emulsion <sup>1</sup>	Dollar

When no item for Asphalt Cement Adjustment and/or Asphalt Cement Adjustment for Emulsion is included in the contract no adjustments will be made.

<sup>1</sup> Not a bid item

12/22/21

SSD: 12/3/79, 4/10/80, 11/19/82, 5/9/83, 12/7/90, 12/20/96, 07/14/04, 09/01/05, 08/06/07,  
01/07/09, 04/15/09 & 11/30/09, 05/12/10, 02/17/11, 07/16/15, 11/02/15, 12/16/15, 01/20/16,  
07/15/16, 08/22/17, 01/23/18, 09/13/18, 02/13/19, 04/24/19, 12/23/19, 04/08/20, 12/14/20, 07/16/21

Page 1 of 3

May 25, 2022

## SPECIAL ATTENTION

### FUEL ADJUSTMENT

- (a) The shortage of all products in relation to the national and worldwide energy situation has made future costs of fuel unpredictable. For this reason, a price adjustment clause is being inserted in this contract to provide for either additional compensation to the Contractor or payment to the State, depending upon an increase or decrease in the price of fuel.
- (b) The fuel usage factors, which will be applied to the several items of the Contract shall be those set forth in Table 1.
- (c) Price adjustment will be based upon the quantity of fuel incorporated in the work as determined by the factors in Table 1.
- When the monthly sales price determined per paragraph (f) is more than 110% of the fixed base price set forth in paragraph (e), a contract adjustment will be made under Item 1010.15 based on: [monthly sales price less 110% of the fixed base price] multiplied by [item quantity eligible for payment during month] multiplied by [fuel factor].
  - When the monthly sales price determined per paragraph (f) is less than 90% of the fixed base price set forth in paragraph (e), a contract adjustment will be made under Item 1010.15 based on: [monthly sales price less 90% of the fixed base price] multiplied by [item quantity eligible for payment during month] multiplied by [fuel factor].
- (d) The Contractor warrants that its bid prices for this Contract include no allowances for any contingency to cover increased costs for which adjustment is provided herein.
- (e) The fixed base price of fuel will be \$ 4.7673 per gallon.
- This price is used solely to compute price adjustments. The fuel price will be the lower bulk retail price of **ultra low sulfur diesel fuel** for Boston as published by OPIS (Oil Price Information Service) in the Oil Price Daily, formerly known as the Journal of Commerce, and will include current Federal and State taxes.

- (f) The monthly sales price of fuel will be determined by the Department based on the following schedule:

2022					
Month	Publication Date	Month	Publication Date	Month	Publication Date
January	December 27, 2021	May	April 25, 2022	September	August 22, 2022
February	January 24, 2022	June	May 23, 2022	October	September 26, 2022
March	February 21, 2022	July	June 27, 2022	November	October 24, 2022
April	March 21, 2022	August	July 25, 2022	December	November 21, 2022

Monthly sales prices will be set in the same manner as indicated in paragraph (e).

- (g) When an adjustment is called for as provided in paragraph (c), the monthly sales price determined in paragraph (f) will be used for work accomplished in the following month.
- (h) No price adjustment will be allowed beyond the Project completion date unless there is a Department-approved extension of time. Price adjustments will be made on quantities adjusted as a result of the final audit.
- (i) The Department will not be responsible for computing or otherwise indicating price adjustments except to the prime contractor, which must make its own arrangements with its subcontractors.
- (j) When no item for Fuel Adjustment is included in the Contract no adjustments will be made.

Pay item and unit:

1010.15      Fuel Adjustment <sup>1</sup>      \$

<sup>1</sup> Not a bid item.

**Table 1 - FUEL FACTORS**

Item of Work	Item No.	Units	Fuel	
<b>Excavation:</b>				
Earth	203.1_.,4_	gal/c.y.	0.26	
	203.50_.,51_.,52_			
	203.6_.,7_			
	206.1_			
	207.1_			
	504.1_			
Rock	203.2_	gal/c.y.	0.34	
	206.2_			
	207.2_			
	504.2_			
Other	203.3_	gal/c.y.	0.31	
	206.3_			
	207.3_			
	583._			
	585._			
	586._			
	587._			
<b>Bases:</b>				
Unprocessed	209._	gal/c.y.	0.46	
	304.1_.,2_			
Processed <sup>4</sup>	304.3_	gal/c.y.	0.82	
	304.4_.,5_.,6_			
	508._			
<b>Bituminous Concrete</b>				
Pavement <sup>2</sup>	403._	gal/ton	1.90	
	411._			
<b>All Other Items:</b>		gal/\$1,000 of work	13.0	
<b>Excluded Items: <sup>3</sup></b>				
210._	510.41_	550.2_	565.7_	692._
211._	510.61_	560._	568._	693._
306.31_	510.65_	561._	592._	697._
306.32_	521.2_	563.1_	603.0001	698._
306.33_	528._	563.2_	618._	699._
410._	544._	563.3_	619._	8_._.
419.3	548._	563.7_	624._	10_._.
510.31_	550.1_	565.2_	645.7_	

<sup>2</sup> Item 403.4, 403.16, & 403.26 shall be calculated using the "All Other Items" category rate.

<sup>3</sup> Also excluded are all supplementary agreements, extra work and per specification items.

<sup>4</sup> Item 304.32 shall be calculated using the "All Other Items" category rate.

**Strafford Square  
Intersection Improvements – Phase 2 – Roadway Reconstruction Project  
Rochester; #14350**

May 2022

**SPECIAL PROVISION**

**SECTION 670 – MISCELLANEOUS INCIDENTALS**

**Item 670.04501 – Construct and Remove Diversion**

**Description**

**1.1** This work shall consist of constructing and removing traffic diversion(s) or temporary widening(s) at locations shown on the plans; as determined by the Traffic Control Plan; or ordered. All work for diversions and widenings shall include temporary sidewalks where required. The typical section to define the earthwork (excavation and embankment), geotextiles (if necessary), side slopes, shoulders, base courses and pavement requirements will be as shown on the plans or as ordered. (The term “diversion” is defined in Section 6C.09 of the MUTCD and will replace the previously used word “detour” in this specification.)

**Materials**

- 2.1** Earthwork materials shall conform to Structural Fill – Item 508.
- 2.2** Earthwork materials and aggregate base course materials shall conform to – Item 304.3.
- 2.3** Geotextile materials shall conform to 593.2.
- 2.4** All other materials necessary to construct diversion or widening shall conform to the material requirements of the respective items.

**Construction Requirements**

- 3.1** See Phasing Plans in the construction plans for the anticipated traffic maintenance requirements. The Contractor shall submit their Traffic Control Plan for review and approval of the Owner and Engineer at least four (4) weeks prior to the start of construction operations involving traffic.
- 3.2** The Contractor shall maintain safe and passable traffic conditions for vehicles and pedestrians at all times.
- 3.3** Excavation and embankment shall be constructed in accordance with pertinent provisions of 203.3.

**Strafford Square  
Intersection Improvements – Phase 2 – Roadway Reconstruction Project  
Rochester; #14350**

May 2022

**3.4** Drainage items shall be installed where necessary or as directed and constructed in accordance with the pertinent provisions of 603.3 and 604.3.

**3.5** Aggregate base courses shall be constructed to the depth and width shown on the plans in accordance with the pertinent provisions of 304.3.

**3.6** Required pavement and cold planning shall be constructed as shown on the plans or directed by the Engineer in accordance with the pertinent provisions of 401.3/403.3 and 417.3 respectively.

**3.7** Geotextiles, if necessary, shall be constructed and placed as shown on the plans or directed by the Engineer in accordance with the pertinent provisions of 593.3.

**3.8** All other items necessary to construct an approved diversion or widening shall be constructed in accordance with the pertinent provisions of the item.

**3.8.1** Material(s) not required for the final roadway configuration shall be removed. Material meeting the item specification after removal may be used elsewhere on the project under appropriate items.

**3.8.2** Disposal of unsuitable material(s) removed from a diversion or widened area shall be the responsibility of the Contractor as set forth in the provisions of Section 203.3.9.

### **Method of Measurement**

**4.1** Construct and remove diversion or widening will be measured as a unit. A unit shall consist of design, all earthwork (including topsoil excavation), temporary earth support and sheeting, aggregate base courses, geotextiles, slope treatment, sawed bituminous pavement, and the maintenance of traffic including installing, maintaining and removing construction signs and warning devices, barricades, delineators, temporary pavement markings, and any work not described in 4.1.1. When more than one unit is specified in the Contract, separate item numbers will appear for each separate and complete unit.

**4.1.1** Constructing, drainage items, pavement, cold planing, guardrail and concrete barrier, performing clearing and grubbing and installing and maintaining erosion control measures, temporary lighting, temporary pavement, and pavement markings will be measured as provided under the respective items.

### **Basis of Payment**

**5.1** The accepted quantity of construct and remove diversion or widening will be paid for at the contract lump sum price.



**Strafford Square  
Intersection Improvements – Phase 2 – Roadway Reconstruction Project  
Rochester; #14350**

May 2022

**5.1.1** Removal of items necessary to provide an approved diversion or widening and not needed for the final roadway configuration, including earthwork, temporary earth support, and any item not specified in 5.1.2 will be subsidiary to construct and remove diversion.

**5.1.2** Constructing, drainage items, pavement, cold planing, guardrail and concrete barrier, performing clearing and grubbing and installing and maintaining erosion control measures, temporary pavement, and pavement markings will be paid as provided under the respective items.

**5.2** Compensation for designing and implementing the Traffic Control Plan shall be included under Item 619.1

**Pay item and units:**

670.04501	Construct and Remove Diversion	Unit
-----------	--------------------------------	------

**SPECIAL ATTENTION**

**PLASTIC RESIN  
ADJUSTMENT**

- (a) The shortage of all products in relation to the national and worldwide energy situation has made future costs of plastic resin unpredictable. For this reason, a price adjustment clause is being inserted in this contract to provide for either additional compensation to the Contractor or payment to the City, depending upon an increase or decrease in the price of plastic resin.
- (b) Price adjustment will be based upon the quantity of plastic resin incorporated in the work.
- When the monthly sales price at the time of materials purchase is more than 110% of the fixed base price as of May 5, 2021, a contract adjustment will be made under Item 1010.65.
  - When the monthly sales price determined per paragraph (f) is less than 90% of the fixed base price as of May 5, 2021, a contract adjustment will be made under Item 1010.65.
- (c) The Contractor warrants that its bid prices for this Contract include no allowances for any contingency to cover increased costs for which adjustment is provided herein.
- (d) The Contractor shall submit with his bid, the material costs of the PVC items that will serve as the basis of payment through this item, if necessary.
- (e) For payment under this item, the Contractor shall receive approval from the City the purchase price will be eligible and payment made under this item, prior to purchasing the PVC products.
- (f) Price adjustments apply to PVC conduit only, as applicable under Items 612 and 614.
- (g) The fixed base price of plastic resin, as of May 12, 2022 shall be as listed here:
- <https://fred.stlouisfed.org/series/PCU325211325211>

- (h) When an adjustment is called for as provided in paragraph (b), the Contractor shall provide the City and Engineer with raw material cost information for the conduit purchased. This information shall include a certified letter stating the price of the conduit at the time of the bid, as well as a certified letter stating the price of conduit at the time of purchase.
- For a contract adjustment due to an increase of 10% of the initial raw cost, the City will compensate the as purchased conduit materials cost less 110% of the materials cost at the time of bid.
  - For a contract adjustment due to a decrease of 10% of the initial materials cost, the contract adjustment will be the difference of 90% of the initial materials cost minus the materials cost at purchase.
- (i) When an adjustment is called for as provided in paragraph (b), the monthly sales price determined in paragraph (f) will be used for work accomplished in the following month.
- (j) There shall be no cost adjustments associated with any elements of the work other than material costs, including shipping, storage, or installation.
- (k) No price adjustment will be allowed beyond the Project completion date unless there is a City-approved extension of time.
- (l) The City will not be responsible for computing or otherwise indicating price adjustments except to the prime contractor, which must make its own arrangements with its subcontractors.

Pay item and unit:

1010.65      Plastic Resin Adjustment <sup>1</sup>      \$

<sup>1</sup> Not a bid item

SDR PROCESSED	DATE	05/22	REVISIONS AFTER PROPOSAL
	DATE	05/22	STATION
NEW DESIGN	TJG	DATE	05/22
SHEET CHECKED	DEM	DATE	05/22
AS BUILT DETAILS		DATE	
NOTEBOOKS		UPDATED QUANTITY SUMMARY TABLES	
BOOK	PAGE	STATION	
BOOK	PAGE		
BOOK	PAGE		
NUMBER	DATE		
1	05/22		

ESTIMATED QUANTITIES SUMMARY TABLE			
ITEM	DESCRIPTION	UNIT	QUANTITY
201.4	REMOVING STUMPS	EA	25
202.41	REMOVAL OF EXISTING PIPE 0-24" DIAMETER	LF	650
202.5	REMOVAL OF CATCH BASINS, DROP INLETS, AND MANHOLES	EA	14
202.6	CURB REMOVAL FOR SALVAGE	LF	1200
202.8	REMOVAL OF FENCE	LF	100
203.1	COMMON EXCAVATION	CY	7250
203.2	ROCK EXCAVATION	CY	450
203.6	EMBANKMENT-IN-PLACE (F)	CY	190
206.19	COMMON STRUCTURE EXCAVATION EXPLORATORY	CY	70
209.1	GRANULAR BACKFILL	CY	210
211.11	VIBRATION MONITORING SERVICES	HR	80
214.	FINE GRADING	U	1
304.2	GRAVEL (F)	CY	2875
304.3	CRUSHED GRAVEL (F)	CY	2100
304.35	CRUSHED GRAVEL FOR DRIVES	CY	260
403.11013	HBP-1" BASE MIX, MACHINE METHOD	TON	1300
403.11023	HBP-3/4" BINDER MIX, MACHINE METHOD	TON	1350
403.11043	HBP-1/2" SURFACE MIX, MACHINE METHOD	TON	725
403.12	HBP-HAND METHOD	TON	360
403.16	PAVEMENT JOINT ADHESIVE	LF	26500
403.19	HBP-TEMPORARY	TON	530
410.22	ASPHALT EMULSION FOR TACK COAT	GAL	670
417.	COLD PLANING BITUMINOUS SURFACES	SY	480
520.01	CONCRETE CLASS AA	CY	1
544.	REINFORCING STEEL (F)	LB	40
593.211	GEOTEXTILE; SEPARATION CL. 1, NON-WOVEN	SY	1000
603.0001	VIDEO INSPECTION	LF	1130
603.00212	12" R.C. PIPE, 2000D	LF	30
603.00215	15" R.C. PIPE, 2000D	LF	490
603.00224	24" R.C. PIPE, 2000D	LF	180
603.00315	15" R.C. PIPE, 3000D	LF	250
603.82212	12" PE PIPE (TYPE S)	LF	180
603.82215	15" PE PIPE (TYPE S)	LF	20
604.0007	POLYETHYLENE LINER	EA	34
604.124	CATCH BASINS TYPE B, 4-FOOT DIAMETER	U	21
604.224	DROP INLETS TYPE B, 4-FOOT DIAMETER	U	3
604.324	DRAINAGE MANHOLES, 4-FOOT DIAMETER	U	6
604.4	RECONSTRUCTING/ADJUSTING CATCH BASIN & DROP INLET	LF	44
604.51	RECONSTRUCTING/ADJUSTING SEWER MANHOLES	LF	14
604.52	RECONSTRUCTING/ADJUSTING DRAINAGE MANHOLES	LF	13
604.62	DRAINAGE MANHOLE COVERS AND FRAMES	EA	1
604.72	GRATES & FRAMES, TYPE B	EA	3
607.5660	VINYL FENCE (STOCKADE), 6'-0" HIGH	LF	380
607.5760	POST ASSEMBLIES FOR VINYL FENCE (STOCKADE), 6'-0" HIGH	EA	10
608.24	4" CONCRETE SIDEWALK (F)	SY	1250
608.26	6" CONCRETE SIDEWALK (F)	SY	110
608.385	8" TEXTURED REINFORCED CONCRETE SIDEWALK	SY	340
608.4615	BRICK PAVER SURFACE	SY	360
608.54	DETECTABLE WARNING DEVICES, CAST IRON	SY	35
609.01	STRAIGHT GRANITE CURB	LF	2800
609.011	SPECIAL GRANITE CURB	LF	50
609.01187	STRAIGHT GRANITE CURB, 18" HIGH WITH 3" ROUNDED EDGE	LF	490
609.02	CURVED GRANITE CURB	LF	510
609.02187	CURVED GRANITE CURB, 18" HIGH WITH 3" ROUNDED EDGE	LF	10
609.5	RESET GRANITE CURB	LF	360
611.815	YARD HYDRANT	EA	1
611.90001	ADJUSTING WATER GATES AND SHUTOFFS SET BY OTHERS	EA	15
611.951	RIGID PIPE INSULATION	SF	90
613.1	UNDERGROUND INFILTRATION SYSTEM	U	1
614.511	CONCRETE PULL BOX 14"	EA	19
614.72118	2" PVC CONDUIT, SCHEDULE 80	LF	300
614.73218	3" 2-DUCT PVC CONDUIT, SCHEDULE 80	LF	1600
615.0301	TRAFFIC SIGN TYPE C	SF	470
615.033	REMOVING TRAFFIC SIGN, TYPE C	U	20
615.0601	TRAFFIC SIGN TYPE CC	SF	90
616.261	RECTANGULAR RAPID FLASHING BEACON (RRFB)	U	3
618.61	UNIFORMED OFFICERS WITH VEHICLE	\$	13000
618.7	FLAGGERS	HR	4500
619.1	MAINTENANCE OF TRAFFIC	U	1
619.25	PORTABLE CHANGEABLE MESSAGE SIGN	U	4
622.52	RESETTING BOUNDS	EA	12
625.42210	2-CONDUCTOR #10 AWG CABLE	LF	200
625.42212	2-CONDUCTOR #12 AWG CABLE	LF	1175
625.42306	3-CONDUCTOR #6 AWG CABLE	LF	5000
625.43306	#6 GROUND WIRE	LF	1800

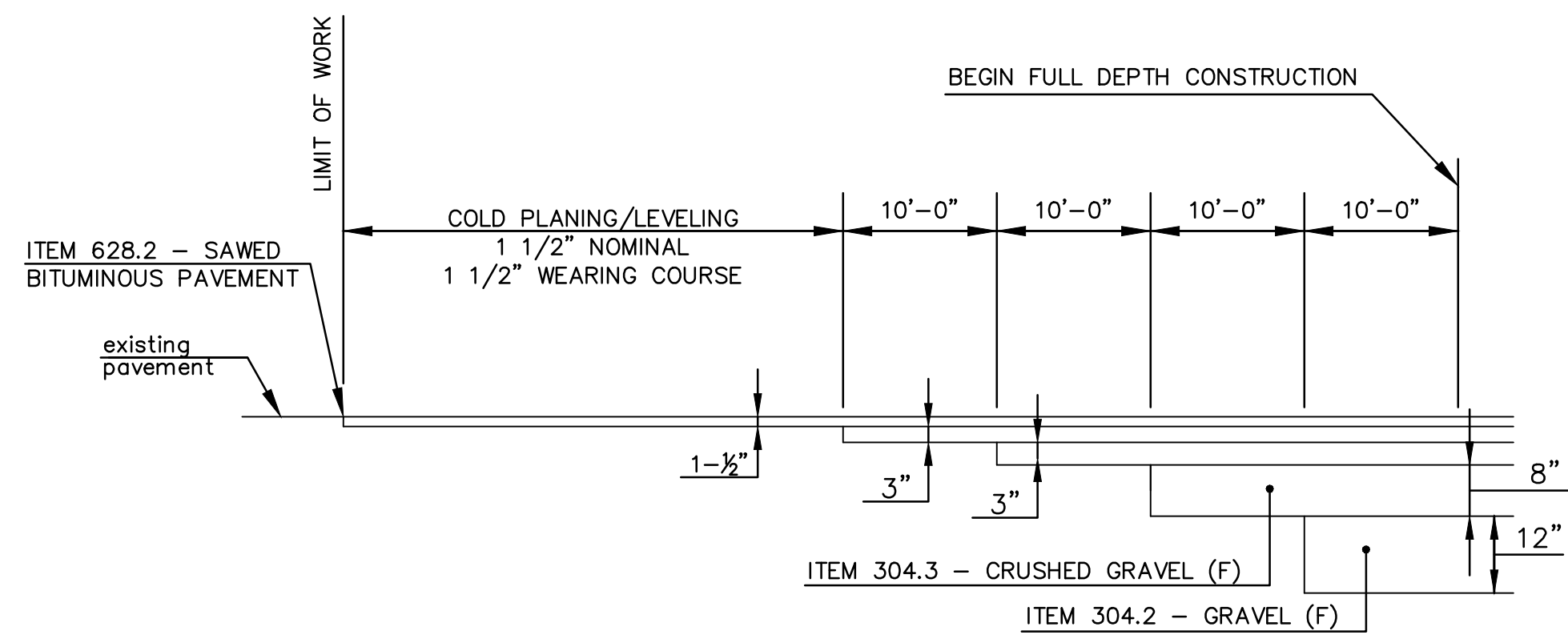
ESTIMATED QUANTITIES SUMMARY TABLE			
ITEM	DESCRIPTION	UNIT	QUANTITY
625.43310	#10 GROUND WIRE	LF	100
625.43312	#12 GROUND WIRE	LF	1180
625.551	ORNAMENTAL LIGHT POLE - SINGLE	EA	12
625.552	ORNAMENTAL LIGHT POLE - DOUBLE	EA	4
626.2	METER PEDESTAL	U	1
628.2	SAWED BITUMINOUS PAVEMENT	LF	850
632.0104	RETROREFLECTIVE PAINT PAVE. MARKING, 4" LINE	LF	12500
632.02	RETROREFLECTIVE PAINT PAVEMENT MARKING, SYMBOL OR WORD	SF	860
632.1104	PREFORMED RETROREFLECTIVE TAPE, TYPE I (REMOVABLE) 4" LINE	LF	16000
632.3104	RETROREFLECT. THERMOPLAS. PAVE. MARKING, 4" LINE	LF	1550
632.3108	RETROREFLECT. THERMOPLAS. PAVE. MARKING, 8" LINE	LF	1550
632.3124	RETROREFLECT. THERMOPLAS. PAVE. MARKING, 24" LINE	LF	750
632.32001	RECESSED RETROREFLECT. THERMOPLAS. PAVE. MARKING, SYMBOL OR WORD	SF	125
641.	LOAM	CY	250
643.21	FERTILIZER FOR REFERTILIZATION	LB	410
644.15	PARK SEED TYPE 15	LB	40
645.154	BARK MULCH 4 INCHES DEEP	SY	360
645.3	EROSION STONE	TON	500
645.512	COMPOST SOCK FOR PERIMETER BERM	LF	4500
645.52	RYEGRASS FOR TEMPORARY EROSION CONTROL	LB	50
645.531	SILT FENCE	LF	4500
645.7	STORM WATER POLLUTION PREVENTION PLAN	U	1
645.71	MONITORING SWPPP AND EROSION AND SEDIMENT CONTROLS	HR	120
646.3	TURF ESTABLISHMENT WITH MULCH AND TACKIFIERS	A	0.5
650.2	LANDSCAPING	U	1
654.01	THUJA OCCIDENTALIS	EA	10
670.04501	CONSTRUCT AND REMOVE DIVERSION	U	1
670.066	MAILBOX SUPPORT ASSEMBLIES	EA	25
670.4	STEEL BOLLARD	EA	4
670.573	CONSTRUCT FLAG POLE AND FOUNDATION	U	1
670.8	PERMEABLE PAVER SYSTEM	SY	100
670.85	RELOCATE WATERING TROUGH	U	1
692.	MOBILIZATION	U	1
693	ON-THE-JOB TRAINING OF UNSKILLED WORKERS	\$	1200
698.12	FIELD OFFICE TYPE B	MON	9
699.	MISCELLANEOUS TEMPORARY EROSION AND SEDIMENT CONTROL	\$	20000
1008.2	MISCELLANEOUS WATER UTILITY RELOCATIONS	\$	10000
1008.3	MISCELLANEOUS SEWER UTILITY RELOCATIONS	\$	7500
1008.51	ALTERATIONS AND ADDITIONS AS NEEDED - MISC. LANDSCAPE TREATMENT	\$	25000
1010.15	FUEL ADJUSTMENT	\$	20000
1010.2	ASPHALT CEMENT ADJUSTMENT	\$	10000
1010.65	PLASTIC RESIN ADJUSTMENT	\$	20000

BID ALTERNATIVE #1 SUMMARY TABLE			
ITEM	DESCRIPTION	UNIT	QUANTITY
614.74118	4" PVC CONDUIT, SCHEDULE 80	LF	1680
614.511	CONCRETE PULL BOX 14"	EA	8

1

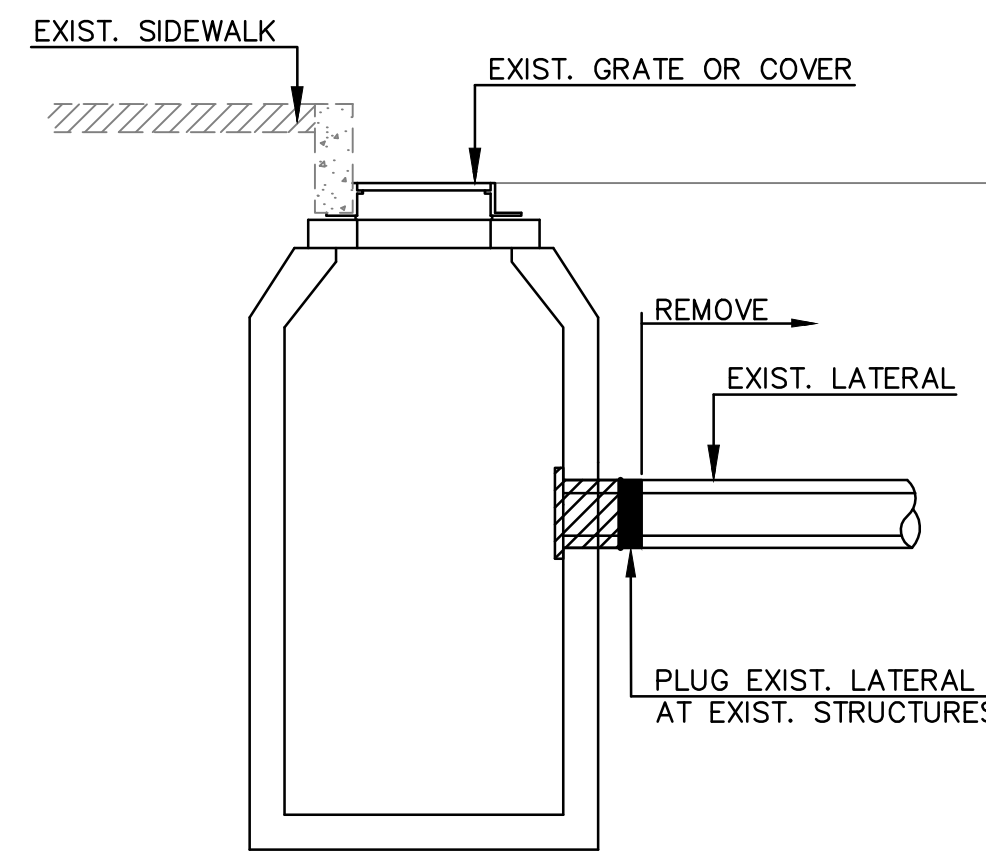
CITY OF ROCHESTER			
PUBLIC WORKS DEPARTMENT			
<b>QUANTITY SUMMARY SHEET</b>			
FEDERAL PROJECT NO.	STATE PROJECT NO.	SHEET NO.	TOTAL SHEETS
X-A000(320)	14350	04	96





**CONSTRUCTION APPROACH**

NOT TO SCALE

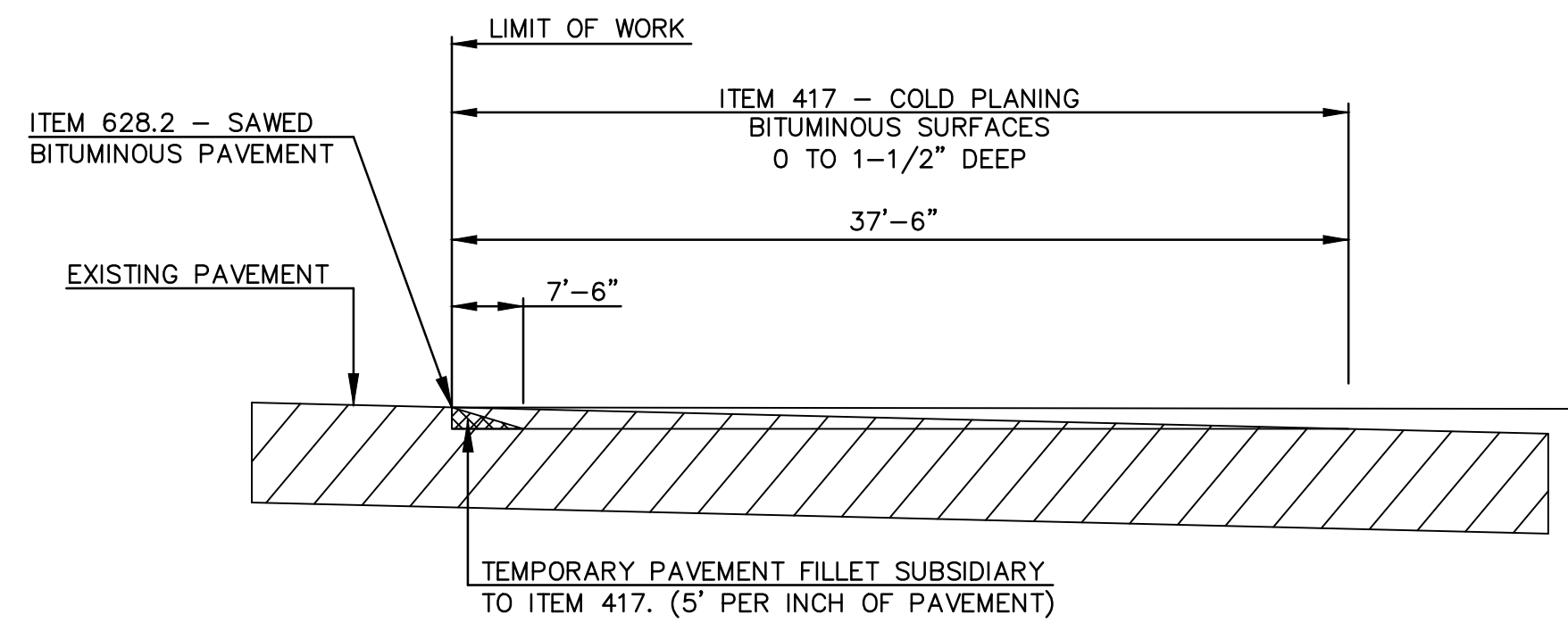


**TYPICAL DETAIL FOR PLUGGING EXISTING LATERAL AT EXISTING STRUCTURE**

NOT TO SCALE

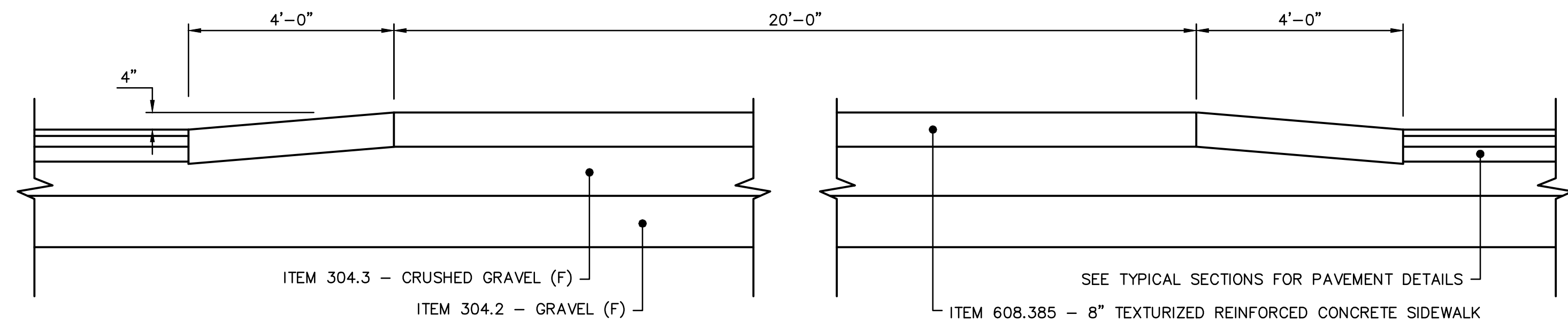
**NOTES:**

1. FOR EXISTING BRICK MANHOLES, REPAIR EXISTING BRICK WORK AND FILL ANNULAR SPACE WITH NON-SHRINK GROUT AS NECESSARY.
2. THE CONTRACTOR SHALL INSTALL PLUGS A MINIMUM OF 12" INTO EXISTING LATERAL AT EXISTING STRUCTURES, FILL WITH NON-SHRINK GROUT TO THE FACE OF THE STRUCTURE AND PARGE A MINIMUM OF 2" AROUND THE ABANDONED CONNECTION.
3. THE CONTRACTOR SHALL UTILIZE THE EXISTING OPENING AT THE STRUCTURE FOR INSTALLATION OF NEW LATERALS WHENEVER POSSIBLE.
4. PLUG EXISTING INVERTS SHALL BE SUBSIDIARY AND NOT MEASURED SEPARATELY.



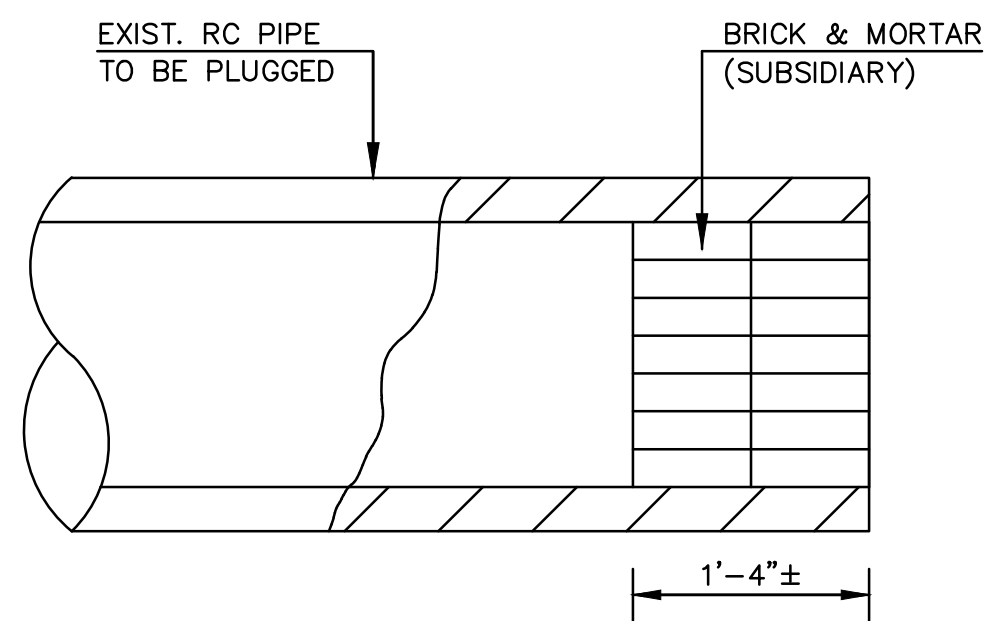
**PAVEMENT TRANSITION SIDE ROADS AND MAJOR DRIVEWAYS**

NOT TO SCALE



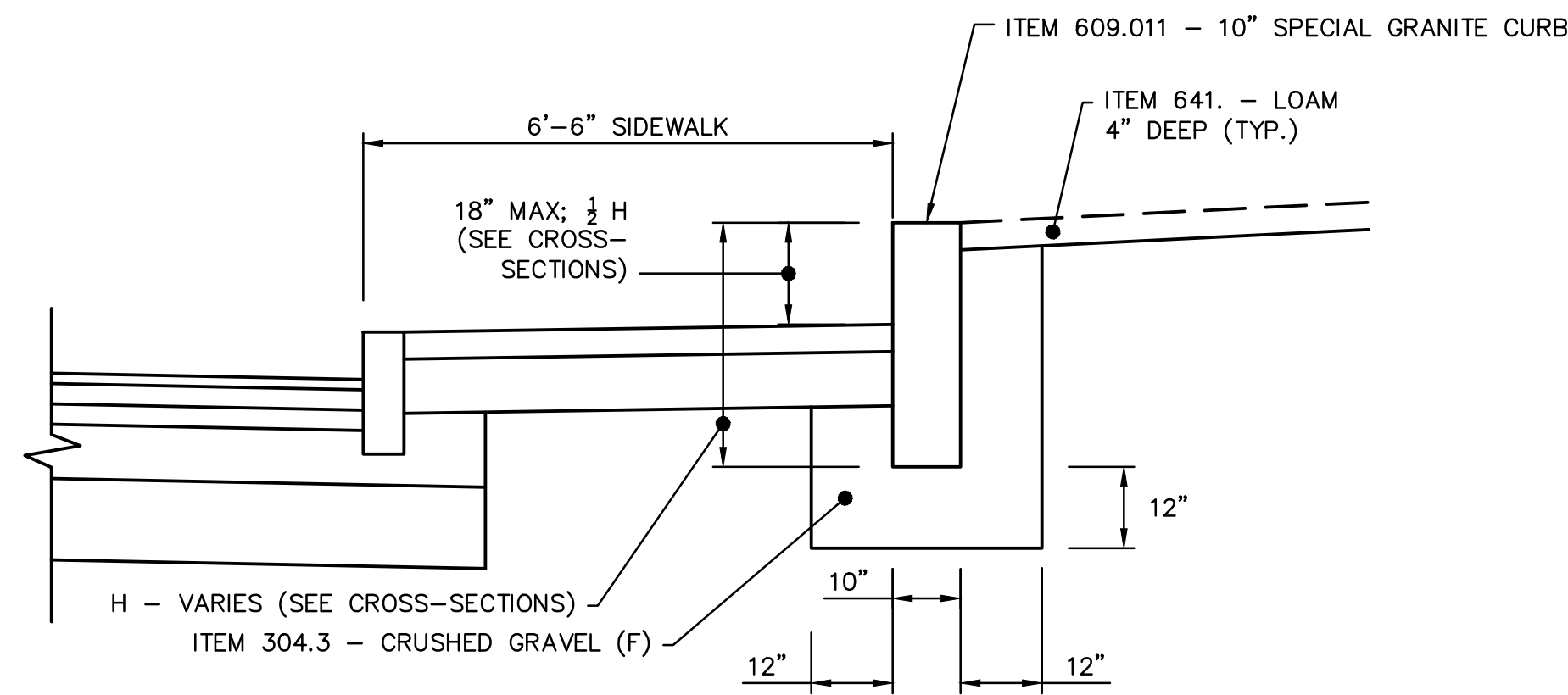
**SPEED TABLE DETAIL**

NOT TO SCALE



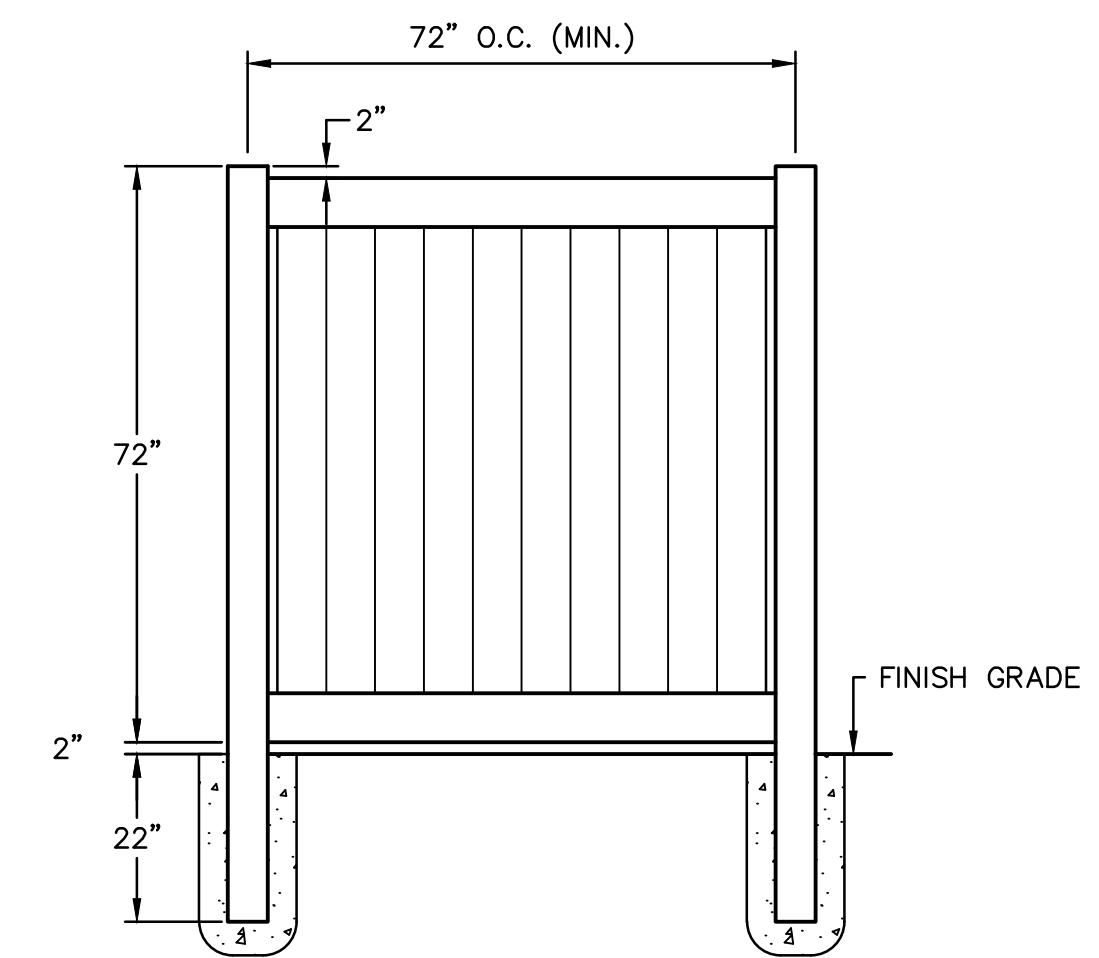
**PIPE PLUG DETAIL**

NOT TO SCALE



**BACK CURB DETAIL**

STA. 31+18 RT TO STA. 31+69 RT  
NOT TO SCALE



**6' VINYL FENCE - ELEVATION**

NOT TO SCALE

REVISIONS AFTER PROPOSAL

STATION

STATION

DATE

NUMBER

NOTEBOOKS

BOOK

BOOK

DATE

DATE

DATE

DATE

DATE

DATE

DATE

DATE

DATE

DESCRIPTION  
UPDATED BACK CURB DETAIL & VINYL FENCE DETAIL

STATION

STATION

DATE

NUMBER

PAGE

PAGE

PAGE

PAGE

DATE

DATE

DATE

DATE

DATE

DATE

DATE

DATE

DATE



CITY OF ROCHESTER

PUBLIC WORKS DEPARTMENT

**MISCELLANEOUS DETAILS**

FEDERAL PROJECT NO.	STATE PROJECT NO.	SHEET NO.	TOTAL SHEETS
X-A000(320)	14350	14	96