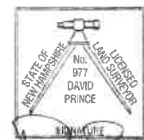


APPROVED BY THE ROCHESTER PLANNING BOARD ON 8/3/20  
SIGNED BY: [Signature] DATE: Chief Planner  
NAME: POSITION:

**CERTIFICATION:**

"I CERTIFY THAT THE STREET LINES AND PHYSICAL FEATURES SHOWN HEREON ARE ACCURATE AND TRUE TO THE BEST OF MY KNOWLEDGE."

DATE: FEBRUARY 26, 2021

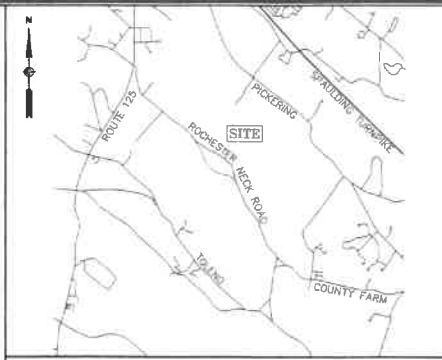


DAVID PRINCE, L.L.S.  
REG. NO. 977  
WSP USA, INC.

**LEGEND**

- CBMH CONCRETE BOUND WITH DRILL HOLE
- PROPERTY LINE
- ABUTTERS LOT LINE
- PROPERTY TIE LINE
- OLD ROCHESTER NECK ROAD

RECEIVED  
MAR 24 2021  
By



**LOCUS MAP (N.T.S.)**

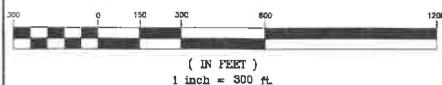
**NOTES**

1. THE INTENT OF THIS PLAN IS TO SHOW THE LOT LINE REVISIONS FOR MAP 267, LOT 2 BECAUSE OF THE RELOCATION OF ROCHESTER NECK ROAD.
2. THIS PLAN WAS PREPARED FROM AN ACTUAL ON-THE-GROUND FIELD SURVEY CONDUCTED BY WSP FROM JULY THRU DECEMBER OF 2020.
3. THE PROPERTY LINE / OWNERSHIP LINE ALONG COCHECO RIVER AND SINGLASS RIVER VARIES FROM THE CENTER LINE TO THE BANK OR SHORE. SEE DEEDS AND PLANS FOR PREVIOUS PARCEL LIMITS ALONG RIVERS.
4. TRAVERSE ERROR OF CLOSURE: 1:57,000.
5. THE HORIZONTAL DATUM SHOWN HEREON REFERENCES THE NEW HAMPSHIRE STATE PLANE COORDINATE SYSTEM NAD83/2011 AND WAS ESTABLISHED BY RTK GPS SURVEY TECHNIQUES UTILIZING THE LEICA SMARTNET SYSTEM.
6. ZONING DISTRICT IS "RECYCLING INDUSTRIAL" FOR LOT MAP 267, LOT 2.
7. THE AREAS SHOWN FOR THE ABUTTING PARCELS OF LAND WERE TAKEN FROM THE ROCHESTER GIS AND NOT THE RESULT OF AN ACTUAL FIELD SURVEY.

**PLAN REFERENCES**

1. "MAJOR SUBDIVISION / SITE REVIEW, FINAL PLAT, FOREST MEADOWS, E.T. ARRO CORPORATION, ROCHESTER, NEW HAMPSHIRE," PREPARED BY DURGIN/SCHOFIELD ASSOCIATES, DATED MARCH 25, 1987, ON RECORD AT THE STRAFFORD COUNTY REGISTRY OF DEEDS (SCRD) AS PLAN 31-29.
2. "PLAN OF LAND IN ROCHESTER, N.H. PREPARED FOR WASTE MANAGEMENT OF NEW HAMPSHIRE, INC." PREPARED BY RICHARD F. KAMINSKI, INC., DATED AUGUST 15, 1991, ON RECORD AT THE STRAFFORD COUNTY REGISTRY OF DEEDS (SCRD) AS PLAN 39-59.
3. "LOT LINE ADJUSTMENT PLAN, ROCHESTER NECK ROAD, ROCHESTER, NEW HAMPSHIRE, PREPARED FOR WASTE MANAGEMENT OF NEW HAMPSHIRE, INC., ROCHESTER, NEW HAMPSHIRE," PREPARED BY OWEN HASKELL, INC., DATED SEPTEMBER 4, 1997, ON RECORD AT THE STRAFFORD COUNTY REGISTRY OF DEEDS (SCRD) AS PLAN 50-57.
4. "LOT LINE REVISION, LANDS OF WATSON & JOHNSON, FOR E.T. ARRO CORPORATION, ROCHESTER, N.H." PREPARED BY JOHN W. DURGIN ASSOCIATES, INC., DATED JUNE 25, 1985, ON RECORD AT THE STRAFFORD COUNTY REGISTRY OF DEEDS (SCRD) AS PLAN 29A-55.
5. "SUBDIVISION PLAN, SINGLASS CONDOMINIUMS FOR MARINA LANDING CORPORATION, ROCHESTER NECK ROAD, STRAFFORD COUNTY, NEW HAMPSHIRE," PREPARED BY THOMAS F. MORAN, INC., DATED AUGUST 31, 1987, ON RECORD AT THE STRAFFORD COUNTY REGISTRY OF DEEDS (SCRD) AS PLAN 38A-48.
6. "LOT LINE REVISION, 38 ROCHESTER NECK ROAD, ROCHESTER NECK ROAD MAP 267, LOT 2," PREPARED BY WSP USA, INC., DATED NOVEMBER 19, 2020, ON RECORD AT THE STRAFFORD COUNTY REGISTRY OF DEEDS (SCRD) AS PLAN 117/52.
7. "ROCHESTER NECK ROAD DISCONTINUANCE PLAN, ROCHESTER NEW HAMPSHIRE" PREPARED BY WSP USA, INC., DATED SEPTEMBER 29, 2020, ON RECORD AT THE STRAFFORD COUNTY REGISTRY OF DEEDS (SCRD) AS PLAN 1221E & 1221F.
8. "ROCHESTER NECK ROAD RELOCATION, ROCHESTER NEW HAMPSHIRE" PREPARED BY WSP USA, INC., DATED SEPTEMBER 29, 2020, ON RECORD AT THE STRAFFORD COUNTY REGISTRY OF DEEDS (SCRD) AS PLAN 1221E & 1221F.

**GRAPHIC SCALE**

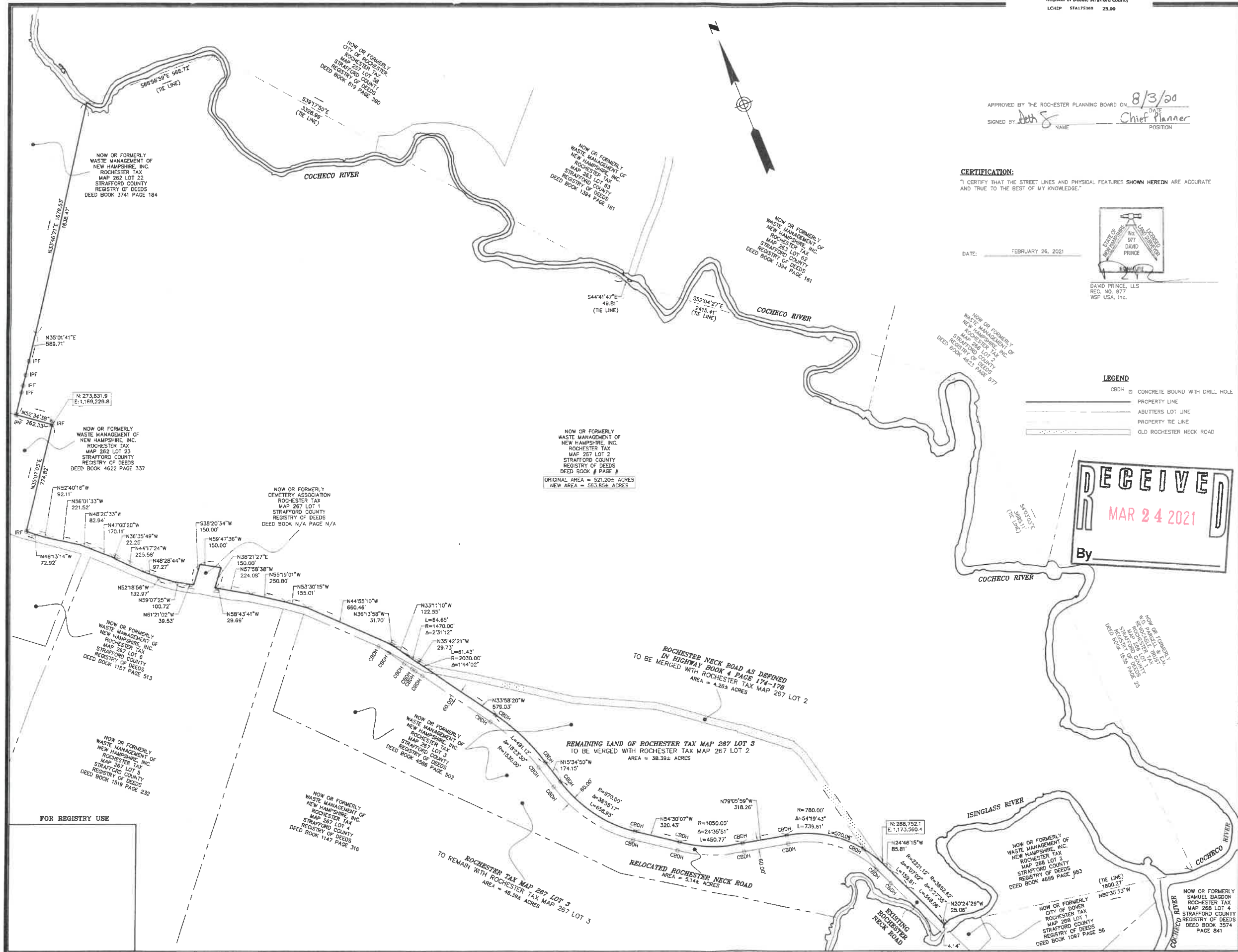


REVISION 30900206-005-1-SUBDIVISION.dwg

DATE	DESCRIPTION
---	---

**LOT LINE REVISION**  
ROCHESTER NECK ROAD  
ROCHESTER, NEW HAMPSHIRE  
MAP 267 LOT 2  
PREPARED FOR  
WASTE MANAGEMENT OF  
NEW HAMPSHIRE, INC

Drawn By	BH	Date	FEBRUARY 26, 2021	Job No.	30900206.005
Surveyed By	JL	Scale	1" = 300'	Sheet No.	1 OF 1
Checked By	DP				
Book No.	N/A				



FOR REGISTRY USE

NOW OR FORMERLY  
WASTE MANAGEMENT OF  
NEW HAMPSHIRE, INC.  
ROCHESTER TAX  
MAP 267 LOT 2  
STRAFFORD COUNTY  
REGISTRY OF DEEDS  
DEED BOOK # PAGE #

ROCHESTER NECK ROAD AS DEFINED  
IN HIGHWAY BOOK 4 PAGE 174-178  
TO BE MERGED WITH ROCHESTER TAX MAP 267 LOT 2  
AREA = 4.26± ACRES

REMAINING LAND OF ROCHESTER TAX MAP 267 LOT 3  
TO BE MERGED WITH ROCHESTER TAX MAP 267 LOT 2  
AREA = 38.39± ACRES

RELOCATED ROCHESTER NECK ROAD  
AREA = 5.14± ACRES

ROCHESTER TAX MAP 267 LOT 3  
TO REMAIN WITH ROCHESTER TAX MAP 267 LOT 3  
AREA = 48.56± ACRES

NOW OR FORMERLY  
WASTE MANAGEMENT OF  
NEW HAMPSHIRE, INC.  
ROCHESTER TAX  
MAP 267 LOT 4  
STRAFFORD COUNTY  
REGISTRY OF DEEDS  
DEED BOOK 1147 PAGE 316

NOW OR FORMERLY  
WASTE MANAGEMENT OF  
NEW HAMPSHIRE, INC.  
ROCHESTER TAX  
MAP 268 LOT 6  
STRAFFORD COUNTY  
REGISTRY OF DEEDS  
DEED BOOK 1917 PAGE 374

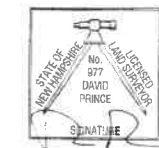
NOW OR FORMERLY  
CITY OF DOVER  
ROCHESTER TAX  
MAP 268 LOT 1  
STRAFFORD COUNTY  
REGISTRY OF DEEDS  
DEED BOOK 1097 PAGE 56

APPROVED BY THE ROCHESTER PLANNING BOARD ON 8/3/20  
DATE  
SIGNED BY *John S.* Chief Planner  
NAME POSITION

#### CERTIFICATION:

"I CERTIFY THAT THE STREET LINES AND PHYSICAL FEATURES SHOWN HEREON ARE ACCURATE AND TRUE TO THE BEST OF MY KNOWLEDGE."

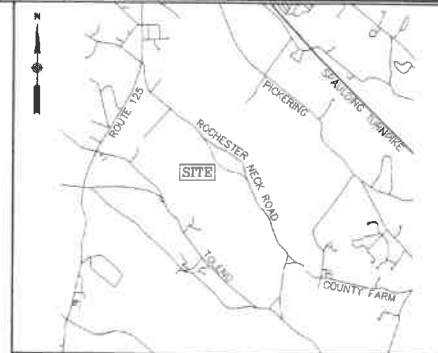
DATE: FEBRUARY 26, 2021



DAVID PRINCE, L.L.S.  
REG. NO. 977  
WSP USA, INC.

#### LEGEND

- CBDH □ CONCRETE BOUND WITH DRILL HOLE
- PROPERTY LINE
- - - ABUTTERS LOT LINE
- - - PROPERTY TIE LINE
- - - OLD ROCHESTER NECK ROAD



#### LOCUS MAP (N.T.S.)

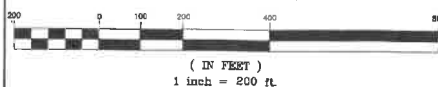
#### NOTES

- THE INTENT OF THIS PLAN IS TO SHOW THE LOT LINE REMAINS FOR MAP 267, LOT 3 BECAUSE OF THE RELOCATION OF ROCHESTER NECK ROAD.
- MAP 267 LOT 3  
CURRENT OWNER:  
WASTE MANAGEMENT OF NEW HAMPSHIRE, INC.  
P.O. BOX 1450  
CHICAGO, IL 60690-1450
- THIS PLAN WAS PREPARED FROM AN ACTUAL ON-THE-GROUND FIELD SURVEY CONDUCTED BY WSP FROM JULY THRU DECEMBER OF 2020.
- TRAVERSE ERROR OF CLOSURE: 1:57,000.
- THE HORIZONTAL DATUM SHOWN HEREON REFERENCES THE NEW HAMPSHIRE STATE PLANE COORDINATE SYSTEM NAD83/2011 AND WAS ESTABLISHED BY RTK GPS SURVEY TECHNIQUES UTILIZING THE LEICA SMARTNET SYSTEM.
- ZONING DISTRICT IS "RECYCLING INDUSTRIAL" FOR LOT MAP 267, LOT 3.
- THE AREAS SHOWN FOR THE ABUTTING PARCELS OF LAND WERE TAKEN FROM THE ROCHESTER GIS AND NOT THE RESULT OF AN ACTUAL FIELD SURVEY.

#### PLAN REFERENCES

- "MAJOR SUBDIVISION / SITE REVIEW, FINAL PLAT, FOREST MEADOWS, E.T. ARGRO CORPORATION, ROCHESTER, NEW HAMPSHIRE," PREPARED BY DURGIN/SCHOFIELD ASSOCIATES, DATED MARCH 25, 1987, ON RECORD AT THE STRAFFORD COUNTY REGISTRY OF DEEDS (SCRD) AS PLAN 31-29.
- "PLAN OF LAND IN ROCHESTER, N.H., PREPARED FOR WASTE MANAGEMENT OF NEW HAMPSHIRE, INC." PREPARED BY RICHARD F. KAMINSKI, INC., DATED AUGUST 15, 1991, ON RECORD AT THE STRAFFORD COUNTY REGISTRY OF DEEDS (SCRD) AS PLAN 39-69.
- "LOT LINE ADJUSTMENT PLAN, ROCHESTER NECK ROAD, ROCHESTER, NEW HAMPSHIRE, PREPARED FOR WASTE MANAGEMENT OF NEW HAMPSHIRE, INC., ROCHESTER, NEW HAMPSHIRE," PREPARED BY OWEN HASKELL, INC., DATED SEPTEMBER 4, 1997, ON RECORD AT THE STRAFFORD COUNTY REGISTRY OF DEEDS (SCRD) AS PLAN 50-57.
- "LOT LINE REVISION, LANDS OF WATSON & JOHNSON, FOR E.T. ARGRO CORPORATION, ROCHESTER, N.H.," PREPARED BY JOHN W. DURGIN ASSOCIATES, INC., DATED JUNE 25, 1986, ON RECORD AT THE STRAFFORD COUNTY REGISTRY OF DEEDS (SCRD) AS PLAN 28A-58.
- "SUBDIVISION PLAN, ISINGLASS CONDOMINIUMS FOR MARINA LANDING CORPORATION, ROCHESTER NECK ROAD, STRAFFORD COUNTY, NEW HAMPSHIRE," PREPARED BY THOMAS F. MORAN, INC., DATED AUGUST 3, 1987, ON RECORD AT THE STRAFFORD COUNTY REGISTRY OF DEEDS (SCRD) AS PLAN 38A-48.
- "LOT LINE REVISION 38 ROCHESTER NECK ROAD, ROCHESTER NECK ROAD (MAP 262, LOT 23) PREPARED BY WSP USA, INC., DATED NOVEMBER 18, 2020, ON RECORD AT THE STRAFFORD COUNTY REGISTRY OF DEEDS (SCRD) AS PLAN 117-52.
- "ROCHESTER NECK ROAD DISCONTINUANCE PLAN, ROCHESTER NEW HAMPSHIRE" PREPARED BY WSP USA, INC., DATED SEPTEMBER 29, 2020, ON RECORD AT THE STRAFFORD COUNTY REGISTRY OF DEEDS (SCRD) AS PLAN 12218 & 12219.
- "ROCHESTER NECK ROAD RELOCATION, ROCHESTER NEW HAMPSHIRE" PREPARED BY WSP USA, INC., DATED SEPTEMBER 29, 2020, ON RECORD AT THE STRAFFORD COUNTY REGISTRY OF DEEDS (SCRD) AS PLAN 12216 & 12217.

#### GRAPHIC SCALE



#### REVISION

DATE DESCRIPTION

LOT LINE REVISION  
ROCHESTER NECK ROAD  
ROCHESTER, NEW HAMPSHIRE  
MAP 267 LOT 3  
PREPARED FOR  
WASTE MANAGEMENT OF  
NEW HAMPSHIRE, INC



WSP USA Inc.  
9 Executive Park Dr. Suite 101  
Merrimack, NH 03054  
603-324-0894

Drawn By	BH	Date	FEBRUARY 26, 2021	Job No.	30900206.005
Surveyed By	JL	Scale	1" = 200'	Sheet No.	1 OF 1
Checked By	DP				
Book No.	N/A				