

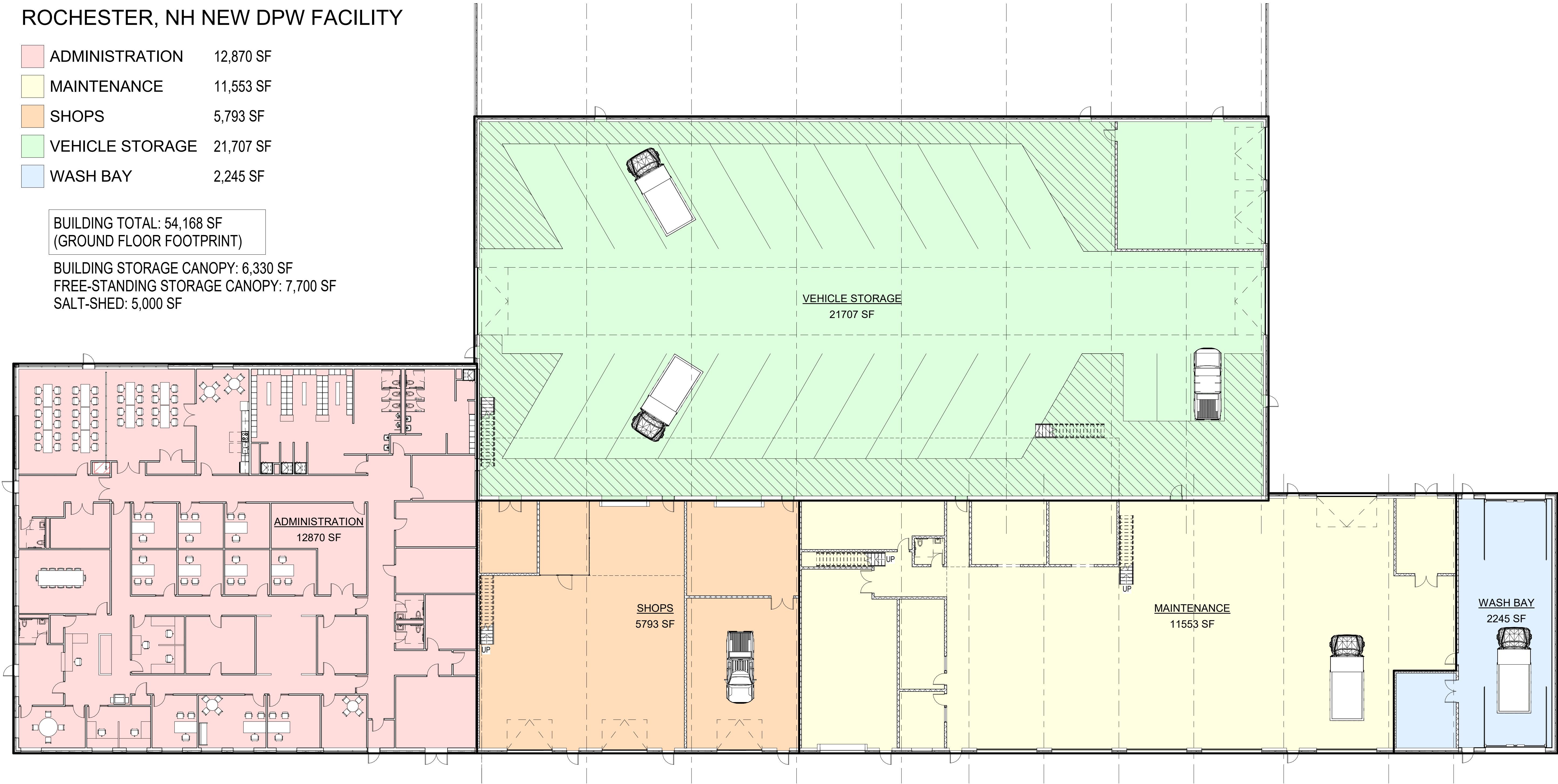


Rochester New Department of Public Works Facility at 209 Chestnut Hill Rd

ROCHESTER, NH NEW DPW FACILITY

ADMINISTRATION	12,870 SF
MAINTENANCE	11,553 SF
SHOPS	5,793 SF
VEHICLE STORAGE	21,707 SF
WASH BAY	2,245 SF

BUILDING TOTAL: 54,168 SF
(GROUND FLOOR FOOTPRINT)
BUILDING STORAGE CANOPY: 6,330 SF
FREE-STANDING STORAGE CANOPY: 7,700 SF
SALT-SHED: 5,000 SF



OVERALL FLOOR PLAN