



City of Rochester, New Hampshire

CITY COUNCIL

PUBLIC SAFETY COMMITTEE

31 Wakefield Street • Rochester, NH 03867

(603) 332-1167

www.RochesterNH.net

November 13, 2014

TO: Public Safety Committee

REGARDING: Public Safety Committee Meeting

There will be a Public Safety Committee meeting on **November 19, 2014** at 7:00 p.m. in Council Chambers.

AGENDA

1. Public Input
2. Sprinklers
3. Academy Street – wrong way signage
4. YMCA signage request
5. New Soccer Field parking concerns (update)
6. Other

Enclosures

cc: Mayor and City Council
Chief Michael Allen
Deputy Chief Scott Dumas
Mr. Peter Nourse
Mr. Michael Bezanson
Ms. Laura Miller
Ms. Lisa Clark

From: [Laura Miller](#)
To: [Samantha Rodgers](#)
Cc: [Michael Bezanson](#)
Subject: Academy Street
Date: Thursday, October 23, 2014 12:26:16 PM

Hello,

We received a call here at DPW regarding some vehicles going the wrong way on Academy Street.

Marylou Dignham is looking to get some sort of signage to indicate that that entrance is a one way.



Thank You

Laura Miller

Secretary II, DPW



**FOR YOUTH DEVELOPMENT®
FOR HEALTHY LIVING
FOR SOCIAL RESPONSIBILITY**

November 10, 2014

Lisa Clark
Department of Public Works
31 Wakefield St.
Rochester, NH 03867

**THE GRANITE YMCA
CORPORATE OFFICE**
117 Market Street
Manchester, NH 03101
P 603.782.2801
F 603.792.0011
www.graniteymca.org

Dear Ms. Clark,

I am writing to request permission to place directional signage on Ten Rod Road for The Granite YMCA. The Granite YMCA has a branch, the YMCA of Strafford County, located on Industrial Way. We have been in that location for approximately 2 years, but we do not have signage indicating that is where we are located.

**YMCA OF DOWNTOWN
MANCHESTER**
30 Mechanic Street
Manchester, NH 03101
P 603.623.3558
F 603.623.5934
www.graniteymca.org/manchester

We have frequent feedback from the community stating that they cannot find us and don't know where our building is. We provide services to many families and individuals in the Rochester community, and hope to provide even more services to the community in the future.

**YMCA ALLARD CENTER OF
GOFFSTOWN**
116 Goffstown Back Road
Goffstown, NH 03045
P 603.497.4663
F 603.497.4837
www.graniteymca.org/goffstown

I spoke with Jim Grant and he advised that I contact you for approval. I have enclosed a map of the area and indicated our preferred location for the signage. The YMCA would pay for the signage and the installation and would donate the sign to the town.

**YMCA OF GREATER
LONDONDERRY**
206 Rockingham Road
Londonderry, NH 03053
P 603.437.9622
F 603.437.1169
www.graniteymca.org/londonderry

We very much desire to become an integral part of the community, and expand our services to meet the growing needs in the area. Signage will help us to reach that goal. If there are further actions that need to be taken to gain approval, please let me know. Thank you so much for your consideration.

Julie Costello


YMCA OF STRAFFORD COUNTY
35 Industrial Way
Rochester, NH 03867
P 603.332.7334
F 603.332.7349
www.graniteymca.org/rochester

District Vice President
The Granite YMCA
jcostello@graniteymca.org

YMCA OF THE SEACOAST
550 Peverly Hill Road
Portsmouth, NH 03801
P 603.431.2334
F 603.431.1314
www.graniteymca.org/portsmouth

YMCA CAMPING SERVICES
Camp Mi-Te-Na for Boys
Camp Foss for Girls
P 603.232.8642

[Home](#) [Mail](#) [News](#) [Sports](#) [Finance](#) [Weather](#) [Games](#) [Groups](#) [Answers](#) [Screen](#) [Flickr](#) [Mobile](#) | [More](#)[Search Maps](#)[Search Web](#)[Sign In](#)[Mail](#)[Print](#)

 [Hotels in Rochester NH](#) [Hotels-Rates.com/Rochester](#) Great Rates at Hotels in Rochester, NH. Book Online or Call Today!

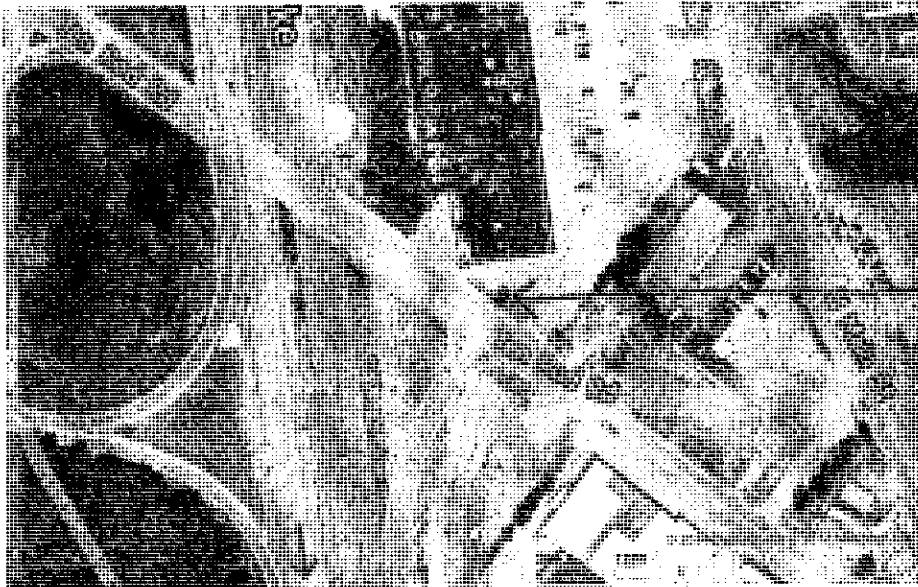
Ad

YAHOO!
MAPS

Ten Rod Rd, Rochester, NH 03867

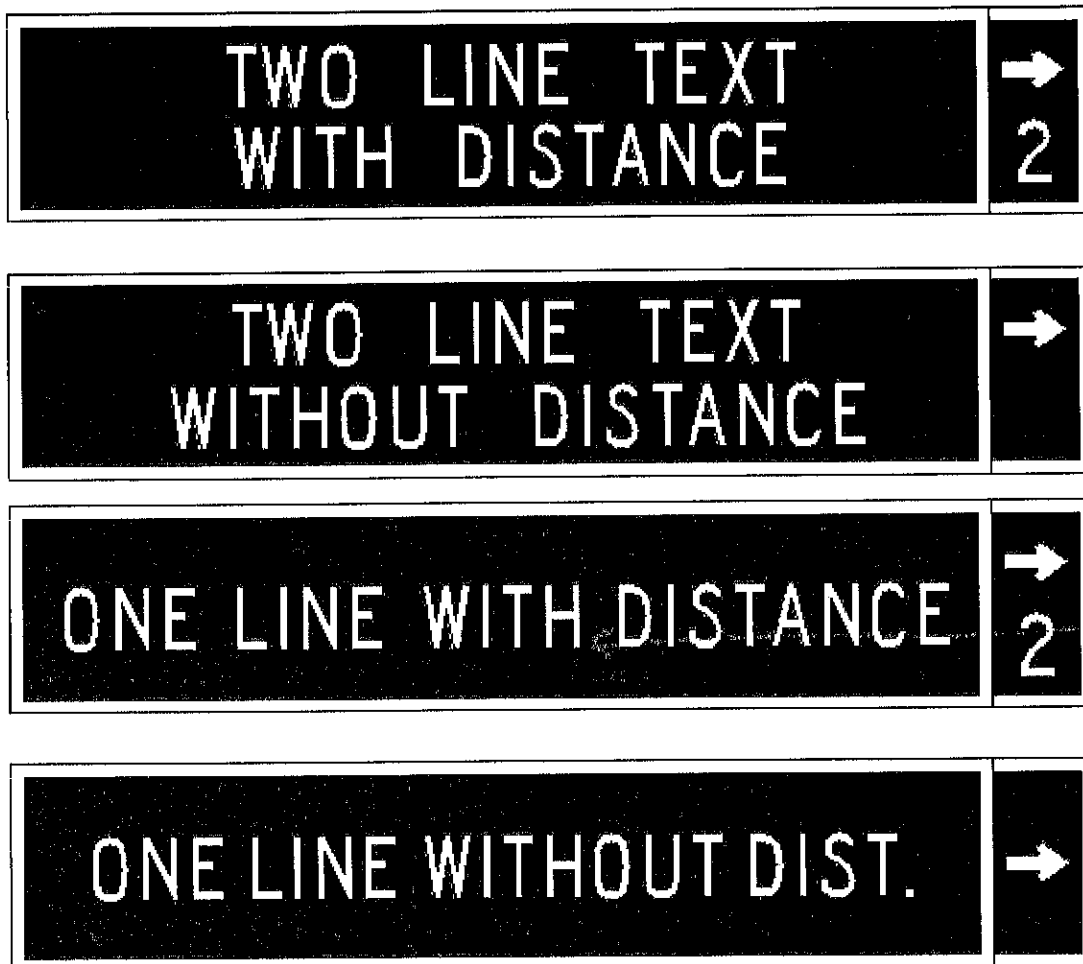
YMCA sign placement

236



When using any driving directions or map, it is a good idea to double check and make sure the road still exists, watch out for construction, and follow all traffic safety precautions. This is only to be used as an aid in planning

FIGURE 2 -- Arrangement of text and placement of directional arrow, with and without distance



NOT TO SCALE

7 feet Long or 8 feet Long
16 inches Tall 20 inches Tall

or
4 feet Long
9 inches Tall

Page 30

or
A "Y" design