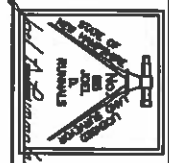




01G SAFE

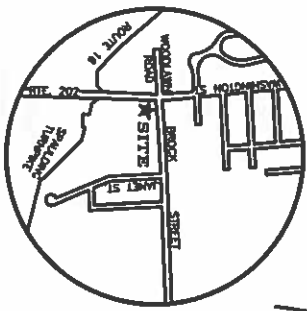


DRAINAGE TABLE

CB-1	RM = 232.4'
RM, OUT = 232.4' (17)	
SLUMP = 225.4'	
CB-2	RM = 233.7'
RM, IN = 233.0' (17)	
RM, OUT = 227.1' (17)	
SLUMP = 224.1'	
CB-3	RM = 231.4'
RM, IN = 228.0' (17)	
RM, OUT = 224.4' (18)	
SLUMP = 221.4'	
CB-4	RM = 228.4'
RM, OUT = 223.7' (17)	
SLUMP = 222.7'	
CB-5	RM = 230.6'
RM, IN = 229.3' (17)	
RM, OUT = 223.0' (17)	
CB-6	RM = 235.0'
RM, IN = 234.5' (17 & 18)	
RM, OUT = 224.7' (18)	
CB-7	RM = 231.5'
RM, IN = 234.5' (17 & 18)	
RM, OUT = 224.7' (18)	
CB-8	RM = 231.4'
RM, IN = 234.5' (18)	
RM, OUT = 224.5' (18)	
CB-9	RM = 229.2'
RM, IN = 224.5' (18)	
RM, OUT = 221.5' (18)	
CB-10	RM = 224.5' (18)
RM, OUT = 221.5' (18)	
CB-11	RM = 219.5'

BROCK STREET

WASHINGTON STREET



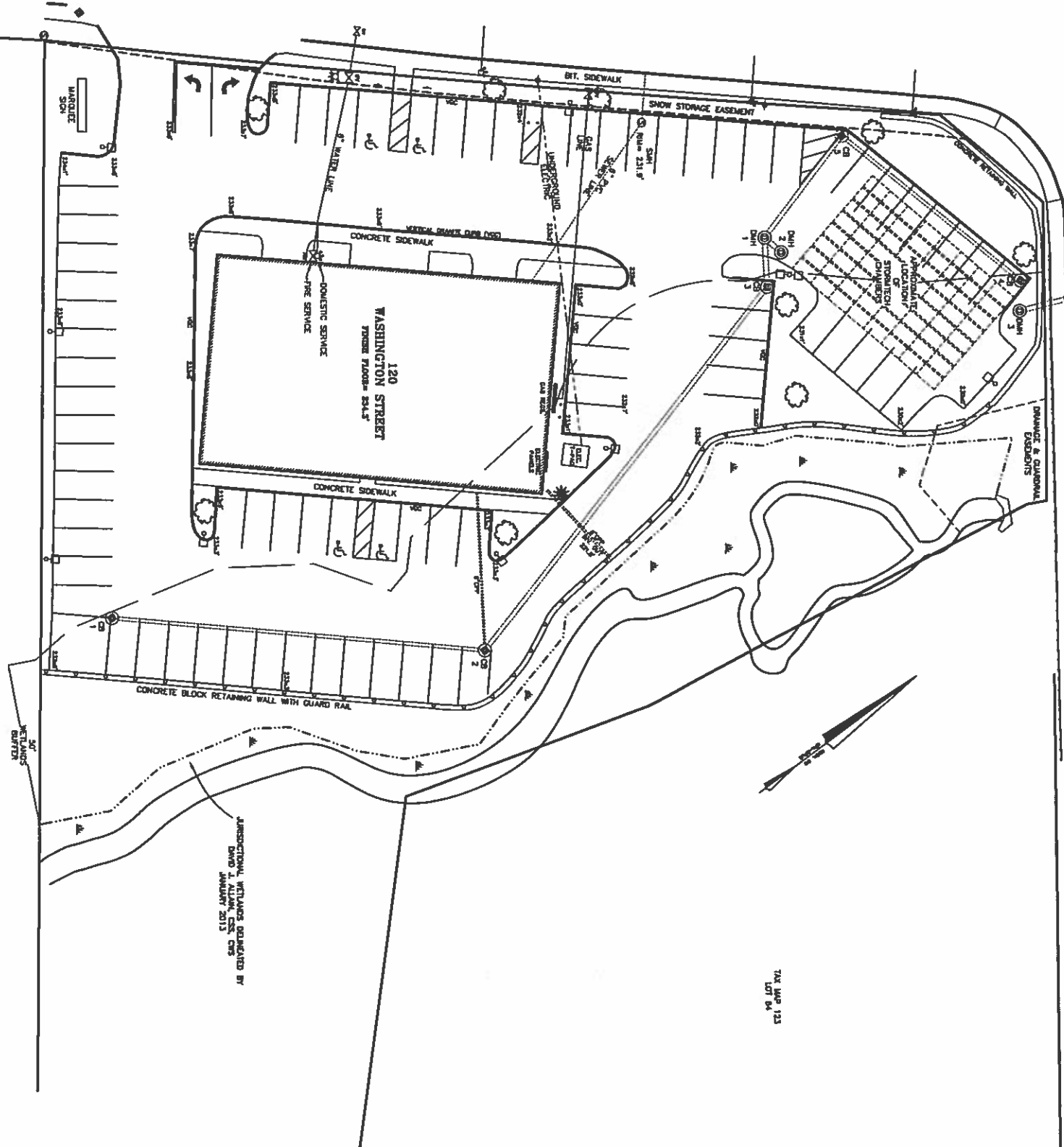
LOCUS MAP

FILE NO. 110  
PLAN NO. C-2659  
DWG NO. 12127\AB-1  
P.B. NO. SDR-865

31 Mooney Street, Alton, N.H. 603-876-3948

NORWAY PLAINS ASSOCIATES, INC.

2 Continental Blvd., Rochester, N.H. 603-336-3948



- GENERAL SITE PLAN NOTES:
1. THE PURPOSE OF THIS PLAN IS TO SHOW THE AS-BUILT SITE FEATURES THAT WERE DEPICTED ON THE REFERENCED PLAN.
  2. ALL UNDERGROUND UTILITY LOCATIONS WERE SURVEYED TO 10% BY THE CONTRACTOR AND WERE NOT LOCATED BY NPA. NPA DOES NOT TAKE ANY RESPONSIBILITY FOR THEIR ACCURACY AND/OR LOCATION.
  3. NORWAY PLAINS ASSOCIATES, INC. CONFIRMS ACCURACY OF ONLY THOSE FEATURES THAT WERE SURVEYED BY NPA. NPA DOES NOT TAKE ANY RESPONSIBILITY FOR THEIR ACCURACY AND/OR LOCATION.
  4. ORIENTATION: HORIZONTAL AND VERTICAL DATUMS - PER ROCHESTER GIS.
  5. THIS AS-BUILT DRAINAGE SUBSTANTIALLY CONFORMS WITH THE FINAL PLANS APPROVED BY THE CITY OF ROCHESTER PLANNING BOARD AND CERTIFIED BY THE PLANNING AND DEVELOPMENT DEPARTMENT.
  6. FOR MORE INFORMATION ABOUT THIS SITE PLAN, CONTACT THE CITY OF ROCHESTER PLANNING DEPARTMENT, 31 WADSWORTH STREET, ROCHESTER, NH 05601, (603) 528-1338.

REFERENCE PLAN:  
1. "PROPOSED OFFICE / RETAIL BUILDING FOR NORWAY PLAINS ASSOCIATES, INC., 120 WASHINGTON STREET, BROCK STREET, ROCHESTER, NH" (UNAPPROVED), DATED MARCH 2013 BY NORWAY PLAINS ASSOCIATES, INC.

RECEIVED  
MAY 3 2014  
Planning Dept.

AS-BUILT SITE PLAN  
120 WASHINGTON STREET  
ROCHESTER, N.H.

PREPARED FOR:  
MCGROEN PARTNERS, LLC



SCALE: 1" = 20' MAY 2014

1 INCH = 20 FEET